

MLXIP antibody

Catalog Number: 112687

Product name

MLXIP antibody

IP: 1:200-1:1000

IHC: 1:20-1:200

Specificity

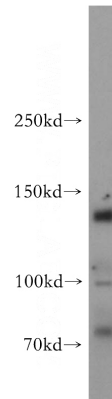
Human, Mouse, Rat; other species not tested.

IF: 1:10-1:100

Antibody description

MLXIP Rabbit Polyclonal antibody. Positive WB detected in K-562 cells. Positive IP detected in K-562 cells. Positive IF detected in HepG2 cells. Positive IHC detected in human skeletal muscle tissue. Observed molecular weight by Western-blot: 130 kDa

Validations



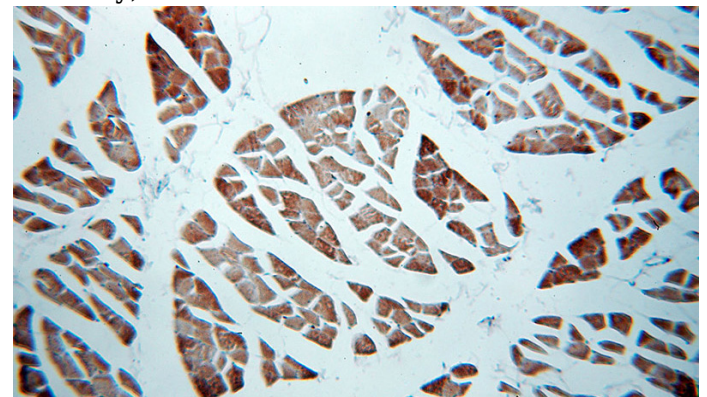
Preparation

This antibody was obtained by immunization of MLXIP recombinant protein (Accession Number: BC039704). Purification method: Antigen affinity purified.

K-562 cells were subjected to SDS PAGE followed by western blot with Catalog No:112687(MLXIP antibody) at dilution of 1:500

Formulation

PBS with 0.02% sodium azide and 50% glycerol pH 7.3.



Storage

Store at -20°C. DO NOT ALIQUOT

Clonality

Polyclonal

Ig Type

Rabbit IgG

Applications

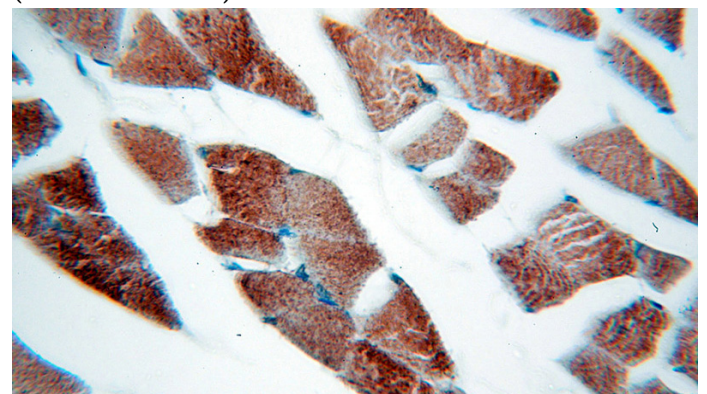
ELISA, WB, IHC, IF, IP

Dilutions

Recommended Dilution:

WB: 1:500-1:5000

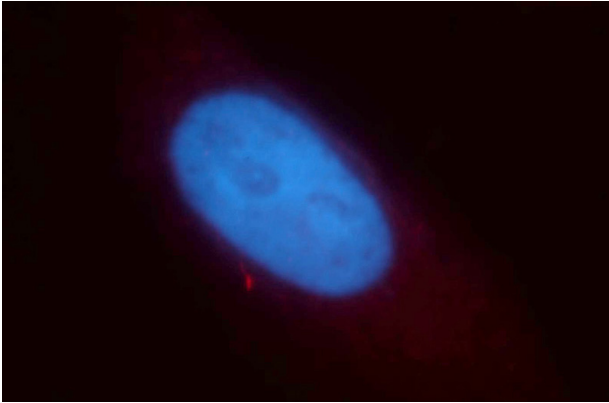
Immunohistochemical of paraffin-embedded human skeletal muscle using Catalog No:112687(MLXIP antibody) at dilution of 1:100 (under 10x lens)



MLXIP antibody

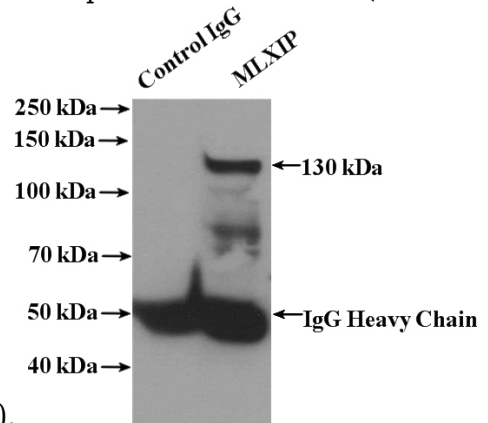
Catalog Number: 112687

Immunohistochemical of paraffin-embedded human skeletal muscle using Catalog No:112687(MLXIP antibody) at dilution of 1:100 (under 40x lens)



Immunofluorescent analysis of HepG2 cells, using MLXIP antibody Catalog No:112687 at 1:25

dilution and Rhodamine-labeled goat anti-rabbit IgG (red). Blue pseudocolor = DAPI (fluorescent



DNA dye).

IP Result of anti-MLXIP (IP:Catalog No:112687, 4ug; Detection:Catalog No:112687 1:300) with K-562 cells lysate 3200ug.