

Anti-CD98/SLC3A2 antibody



Catalog Number: 103287

Product name

Anti-CD98/SLC3A2 antibody

Immunogen

[Human CD98/SLC3A2 \(His Tag\) recombinant protein](#)

Specificity

Human CD98 / SLC3A2

Antibody description

Rabbit polyclonal to CD98/SLC3A2

Preparation

Produced in rabbits immunized with purified, recombinant Human CD98 / SLC3A2 (rh CD98 / SLC3A2; P08195-1; Arg 206-Ala 630). CD98 / SLC3A2 specific IgG was purified by Human CD98 / SLC3A2 affinity chromatography.

Formulation

0.2 µm filtered solution in PBS with 5% trehalose

Storage

This antibody can be stored at 2°C-8°C for one month without detectable loss of activity. Antibody products are stable for twelve months from date of receipt when stored at -20°C to -80°C.

Preservative-Free.

Sodium azide is recommended to avoid contamination (final concentration 0.05%-0.1%). It is toxic to cells and should be disposed of properly. Avoid repeated freeze-thaw cycles.

Clonality

Polyclonal

Ig Type

Rabbit IgG

Applications

ELISA, WB, IHC-P, IP

Dilutions

WB: 1-2 µg/mL

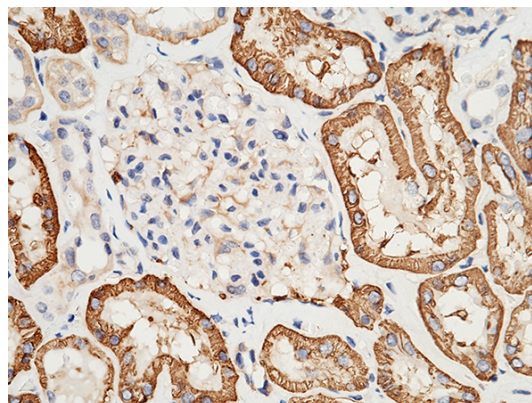
ELISA: 0.5-1 µg/mL

This antibody can be used at 0.5-1 µg/mL with the appropriate secondary reagents to detect Human SLC3A2. The detection limit for Human SLC3A2 is approximately 0.00245 ng/well.

IHC-P: 0.1-2 µg/mL

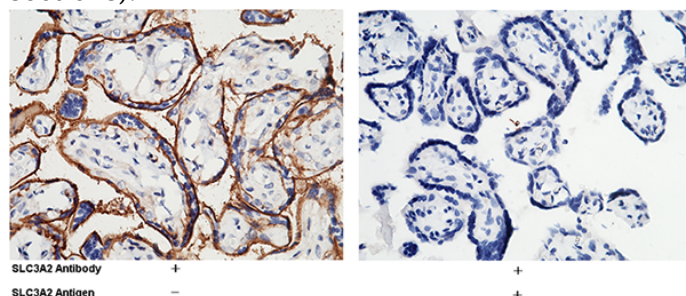
IP: 0.5-1 µg/mg of lysate

Validations



SLC3A2 / CD98 Antibody, Rabbit PAb, Antigen Affinity Purified, Immunohistochemistry

Immunochemical staining of human SLC3A2 in human kidney with rabbit polyclonal antibody (1 µg/mL, formalin-fixed paraffin embedded sections).



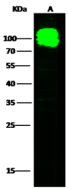
SLC3A2 / CD98 Antibody, Rabbit PAb, Antigen

Anti-CD98/SLC3A2 antibody

Catalog Number: 103287

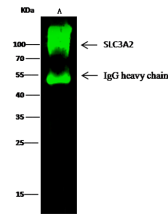
Affinity Purified, Immunohistochemistry

Immunochemical staining of human SLC3A2 in human placenta with rabbit polyclonal antibody (1 µg/mL, formalin-fixed paraffin embedded sections). The left panel: tissue incubated with primary antibody; The right panel: tissue incubated with the mixture of primary antibody and antigen (recombinant protein).



Lanes	A
Sample (whole cell lysate)	HepG2
Sample Volume (µg/tare)	30
Gel	13% SDS-PAGE reducing gel
Recommended Concentration	1-2 µg/ml
Secondary Antibody	Dylight 800-labeled Antibody To Rabbit IgG (H+L), at 1:5000 dilution.

SLC3A2 / CD98 Antibody, Rabbit PAb, Antigen Affinity Purified, Western blot



Lanes	A
Sample (whole cell lysate)	Hela
Sample quantity	0.5 mg
IP antibody quantity	2 µg
Protein G agarose	1.5 µl of 50% Protein G Agarose
Gel	13% SDS-PAGE reducing gel
Primary antibody	SLC3A2 antibody at 10 µg/ml [Cat# 12206-RP02]
Secondary antibody	Dylight 800-labeled antibody to rabbit IgG (H+L), at 1:5000 dilution.

SLC3A2 / CD98 Antibody, Rabbit PAb, Antigen Affinity Purified, Immunoprecipitation