

# DLD antibody

Catalog Number: 109987

## Product name

DLD antibody

## Specificity

Human, Mouse, Rat; other species not tested.

## Antibody description

DLD Rabbit Polyclonal antibody. Positive WB detected in human liver tissue, HepG2 cells, human brain tissue, mouse heart tissue. Positive IP detected in mouse liver tissue. Positive IHC detected in human kidney tissue, human brain tissue, human heart tissue, human liver tissue, human lung tissue, human ovary tissue, human placenta tissue, human skin tissue, human spleen tissue, human testis tissue. Observed molecular weight by Western-blot: 56 kDa

## Preparation

This antibody was obtained by immunization of DLD recombinant protein (Accession Number: NM\_000108). Purification method: Antigen affinity purified.

## Formulation

PBS with 0.02% sodium azide and 50% glycerol pH 7.3.

## Storage

Store at -20°C. DO NOT ALIQUOT

## Clonality

Polyclonal

## Ig Type

Rabbit IgG

## Applications

ELISA, WB, IHC, IP

## Dilutions

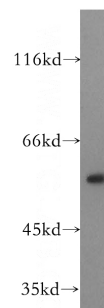
Recommended Dilution:

WB: 1:500-1:5000

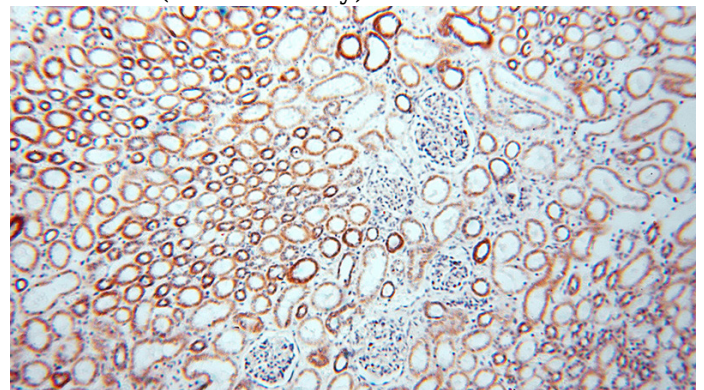
IP: 1:500-1:5000

IHC: 1:20-1:200

## Validations



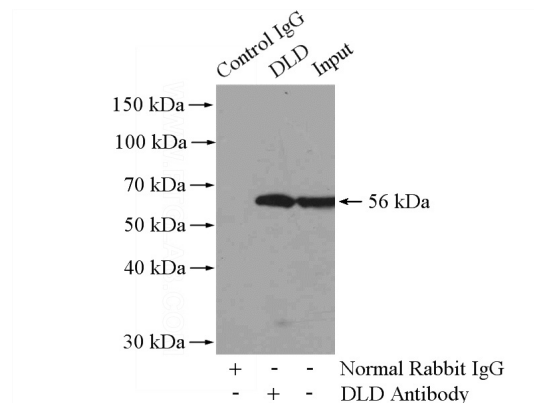
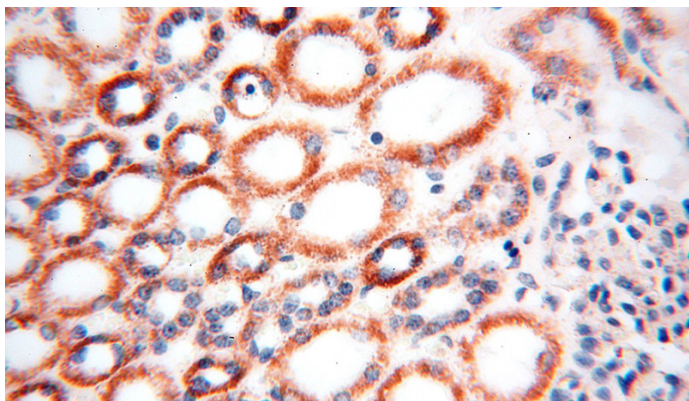
human liver tissue were subjected to SDS PAGE followed by western blot with Catalog No:109987(DLD antibody) at dilution of 1:500



Immunohistochemical of paraffin-embedded human kidney using Catalog No:109987(DLD antibody) at dilution of 1:100 (under 10x lens)

# DLD antibody

Catalog Number: 109987



Immunohistochemical of paraffin-embedded human kidney using Catalog No:109987(DLD antibody) at dilution of 1:100 (under 40x lens)

IP Result of anti-DLD (IP:Catalog No:109987, 4ug; Detection:Catalog No:109987 1:1000) with mouse liver tissue lysate 6000ug.