

Lin28A-specific antibody



Catalog Number: 106987

Product name

Lin28A-specific antibody

Specificity

Human, Mouse, Rat; other species not tested.

Antibody description

Lin28A-specific Rabbit Polyclonal antibody. Positive WB detected in human heart tissue, hESC cells, human brain tissue, mouse liver tissue, NCCIT cell. Positive IHC detected in human small intestine tissue, human brain tissue, human heart tissue, human kidney tissue, human lung tissue, human ovary tissue, human spleen tissue, human testis tissue. Observed molecular weight by Western-blot: 28 kDa

Preparation

This antibody was obtained by immunization of Peptide (Accession Number: NM_024674). Purification method: Antigen affinity purified.

Formulation

PBS with 0.02% sodium azide and 50% glycerol pH 7.3.

Storage

Store at -20°C. DO NOT ALIQUOT

Clonality

Polyclonal

Ig Type

Rabbit IgG

Applications

ELISA, WB, IHC

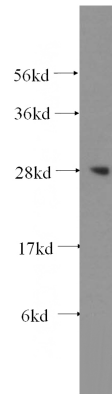
Dilutions

Recommended Dilution:

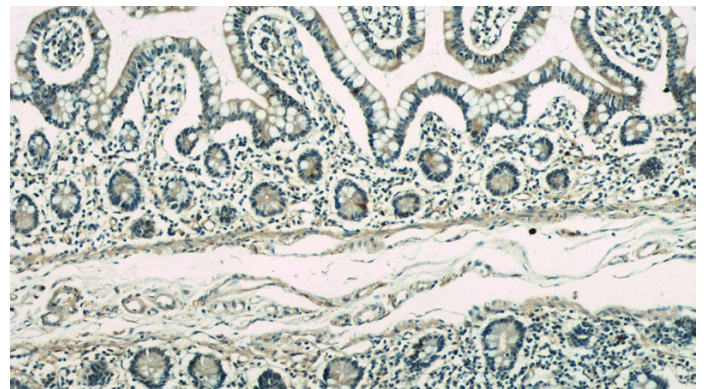
WB: 1:500-1:5000

IHC: 1:20-1:200

Validations



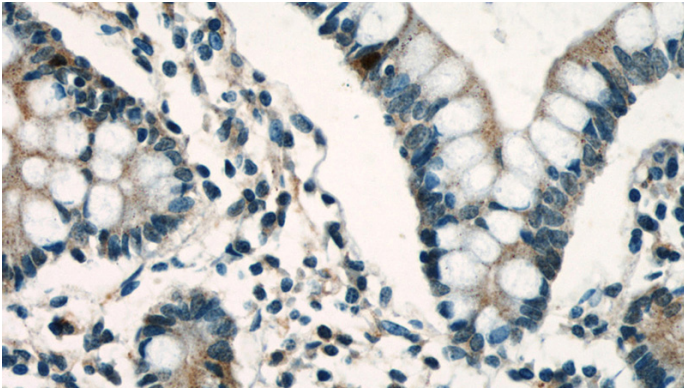
human heart tissue were subjected to SDS PAGE followed by western blot with Catalog No:112232(Lin28A-specific antibody) at dilution of 1:300



Immunohistochemical of paraffin-embedded human small intestine using Catalog No:112232(Lin28A-specific antibody) at dilution of 1:50 (under 10x lens)

Lin28A-specific antibody

Catalog Number: 106987



Immunohistochemical of paraffin-embedded human small intestine using Catalog No:112232(Lin28A-specific antibody) at dilution of 1:50 (under 40x lens)