

Anti-SYPL1 Rabbit antibody



Catalog Number: 166987

Product name

Anti-SYPL1 Rabbit antibody

Specificity

Human, Mouse, Rat

Antibody description

SYPL1 Rabbit polyclonal antibody

Preparation

Antigen: Recombinant protein of human SYPL1

Formulation

Supplied in 50nM Tris-Glycine(pH 7.4), 0.15M NaCl, 40%Glycerol, 0.01% sodium azide and 0.05% BSA.

Storage

Store at -20°C. Stable for 12 months from date of receipt.

Clonality

Polyclonal

Ig Type

Rabbit IgG

Applications

WB, IHC-P, FC

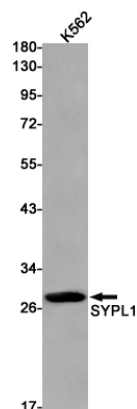
Dilutions

WB: 1/1000

IHC: 1/20-1/100

FC: 1/20

Validations



Western blot detection of SYPL1 in K562 cell lysates using SYPL1 Rabbit pAb(1:1000 diluted). Predicted band size:29kDa.Observed band size:29kDa.