

# MMP25 Polyclonal Antibody

Catalog Number: 163987

## Product name

MMP25 Polyclonal Antibody

## Specificity

Human, Mouse, Rat

## Antibody description

Polyclonal antibody to MMP25

## Preparation

Antigen: A synthetic peptide of human MMP25

## Formulation

PBS with 0.02% sodium azide, 50% glycerol, pH7.3.

## Storage

Store at -20°C. Avoid freeze / thaw cycles.

## Clonality

Polyclonal

## Ig Type

Rabbit IgG

## Applications

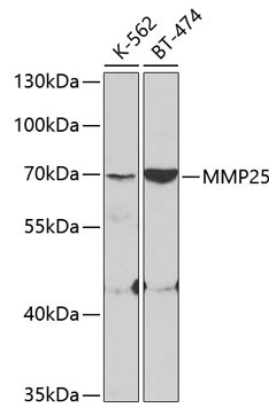
WB, IHC

## Dilutions

WB 1:500 - 1:2000

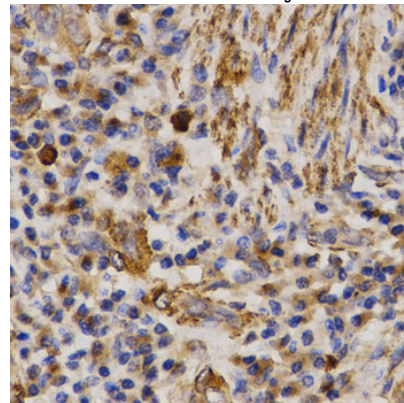
IHC 1:50 - 1:200

## Validations



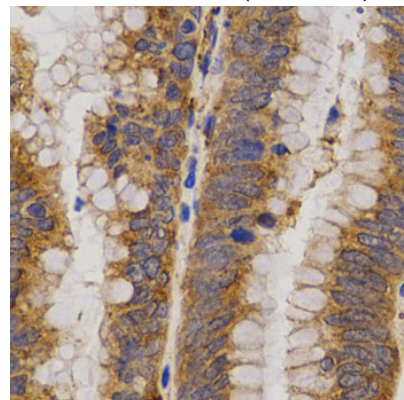
Western blot - MMP25 Polyclonal Antibody

Western blot analysis of extracts of various cell lines, using MMP25 antibody at 1:400 dilution. Secondary antibody: HRP Goat Anti-Rabbit IgG (H+L) at 1:10000 dilution. Lysates/proteins: 25ug per lane. Blocking buffer: 3% nonfat dry milk in TBST.



Immunohistochemistry - MMP25 Polyclonal Antibody

Immunohistochemistry of paraffin-embedded human lung cancer using MMP25 antibody at dilution of 1:200 (40x lens).



# MMP25 Polyclonal Antibody



Catalog Number: 163987

---

Immunohistochemistry - MMP25 Polyclonal Antibody

Immunohistochemistry of paraffin-embedded human rectal cancer using MMP25 antibody at dilution of 1:200 (40x lens).