

CHD1 Polyclonal Antibody

Catalog Number: 165587

Product name

CHD1 Polyclonal Antibody

Specificity

Human, Mouse, Rat

Antibody description

Polyclonal antibody to CHD1

Preparation

Antigen: A synthetic peptide corresponding to a sequence within amino acids 1600 to the C-terminus of human CHD1 (NP_001261.2).

Formulation

PBS with 0.02% sodium azide, 50% glycerol, pH7.3.

Storage

Store at -20°C. Avoid freeze / thaw cycles.

Clonality

Polyclonal

Ig Type

Rabbit IgG

Applications

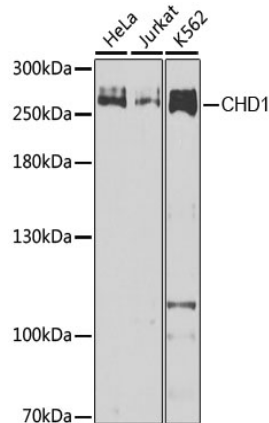
WB, IHC

Dilutions

WB 1:500 - 1:2000

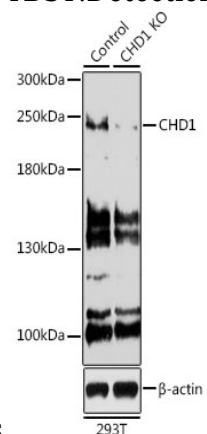
IHC 1:100 - 1:200

Validations



Western blot - CHD1 Polyclonal Antibody

Western blot analysis of extracts of various cell lines, using CHD1 Antibody at 1:1000 dilution. Secondary antibody: HRP Goat Anti-Rabbit IgG (H+L) at 1:10000 dilution. Lysates/proteins: 25ug per lane. Blocking buffer: 3% nonfat dry milk in TBST. Detection: ECL



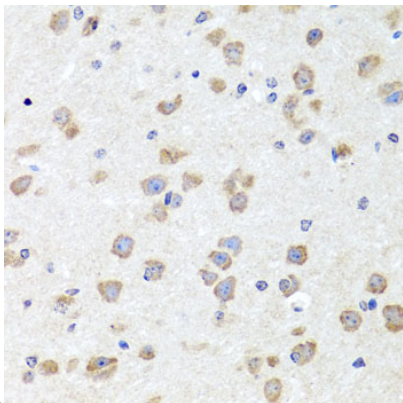
Basic Kit .Exposure time: 90s.

Western blot - CHD1 Polyclonal Antibody

Western blot analysis of extracts from normal (control) and CHD1 knockout 293T cells, using CHD1 antibody at 1:500 dilution. Secondary antibody: HRP Goat Anti-Rabbit IgG (H+L) at 1:10000 dilution. Lysates/proteins: 25ug per lane. Blocking buffer: 3% nonfat dry milk in TBST. Detection: ECL Basic Kit .Exposure time:

CHD1 Polyclonal Antibody

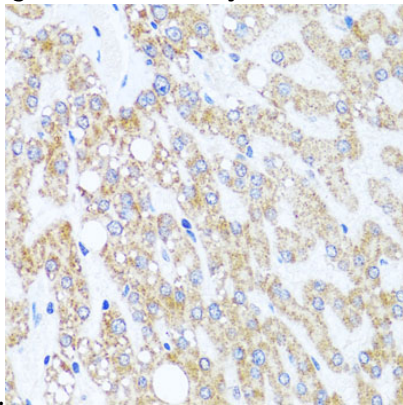
Catalog Number: 165587



90s.

Immunohistochemistry - CHD1 Polyclonal Antibody

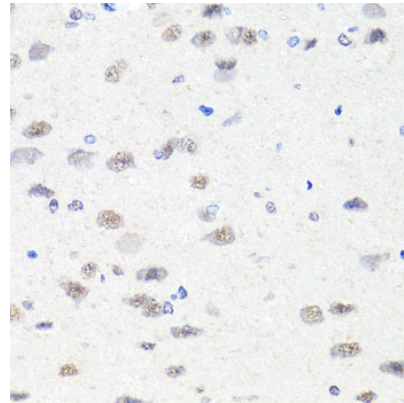
Immunohistochemistry of paraffin-embedded mouse brain using CHD1 antibody at dilution of



1:100 (40x lens).

Immunohistochemistry - CHD1 Polyclonal Antibody

Immunohistochemistry of paraffin-embedded human liver injury using CHD1 antibody at dilution of 1:100 (40x lens).



Immunohistochemistry - CHD1 Polyclonal Antibody

Immunohistochemistry of paraffin-embedded human lung cancer using CHD1 antibody at dilution of 1:100 (40x lens).