

# RB1CC1 antibody

Catalog Number: 114587

## Product name

RB1CC1 antibody

IHC: 1:20-1:200

IF: 1:10-1:100

## Specificity

Human, Mouse; other species not tested.

## Antibody description

RB1CC1 Rabbit Polyclonal antibody. Positive IF detected in HeLa cells. Positive IHC detected in human breast cancer tissue. Positive WB detected in MCF7 cells, HeLa cells, mouse skeletal muscle tissue, NIH/3T3 cells. Observed molecular weight by Western-blot: 180-200 kDa

## Preparation

This antibody was obtained by immunization of RB1CC1 recombinant protein (Accession Number: XM\_011517643). Purification method: Antigen affinity purified.

## Formulation

PBS with 0.02% sodium azide and 50% glycerol pH 7.3.

## Storage

Store at -20°C. DO NOT ALIQUOT

## Clonality

Polyclonal

## Ig Type

Rabbit IgG

## Applications

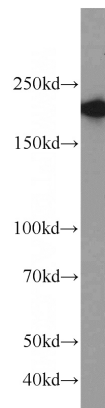
ELISA, WB, IHC, IF

## Dilutions

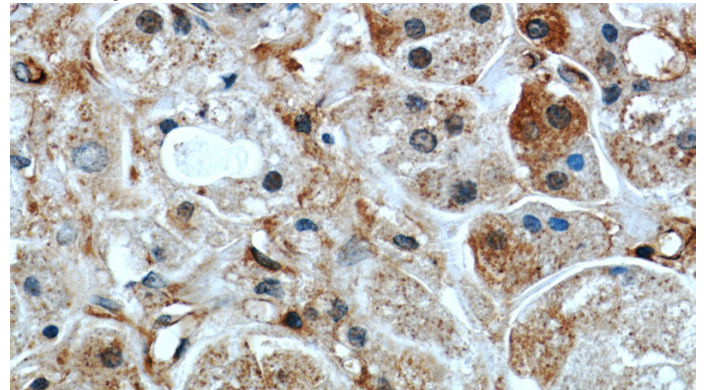
Recommended Dilution:

WB: 1:500-1:5000

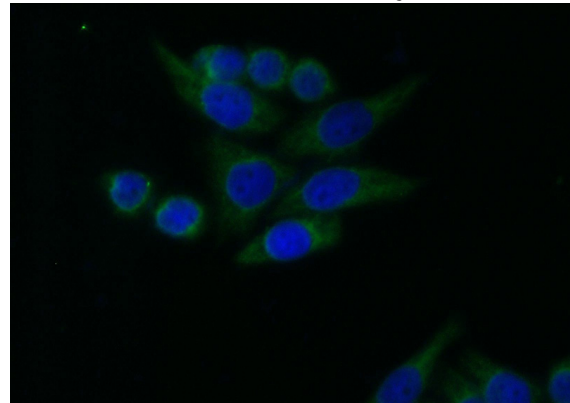
## Validations



MCF7 cells were subjected to SDS PAGE followed by western blot with Catalog No:114587(RB1CC1 antibody) at dilution of 1:1000



Immunohistochemistry of paraffin-embedded human breast cancer slide using Catalog No:114587(RB1CC1 Antibody) at dilution of 1:50



Immunofluorescent analysis of HeLa cells using Catalog No:114587(RB1CC1 Antibody) at dilution of 1:50

# RB1CC1 antibody



Catalog Number: 114587

---

of 1:25 and Alexa Fluor 488-conjugated AffiniPure Goat Anti-Rabbit IgG(H+L)