

Human CXCL1 recombinant protein



Catalog Number: 503587

General Information

Gene Name Synonym

C-X-C motif chemokine 1; GRO-alpha(1-73);
Melanoma growth stimulatory activity;
Neutrophil-activating protein 3; GRO-alpha(4-73);
GRO-alpha(5-73); GRO-alpha(6-73)

Protein Construction

A DNA sequence encoding the human CXCL1 (P09341-1) (Ala35-Asn107) was expressed.

Organism

Human

Expression Host

E. coli

QC Testing

Purity

> 85 % as determined by SDS-PAGE

Endotoxin

Please contact us for more information.

Stability

Samples are stable for up to twelve months from date of receipt at -70°C

Predicted N terminal

Ala 35

Molecular Mass

The recombinant human CXCL1 consists of 73 amino acids and predicts a molecular mass of 7.9 kDa. It migrates as an approximately 7-10 kDa band in SDS-PAGE under reducing conditions.

Formulation

Lyophilized from sterile PBS, pH 7.4.

1. 5 % trehalose and mannitol are added as protectants before lyophilization.
2. Please contact us for any concerns or special requirements.

Usage Guide

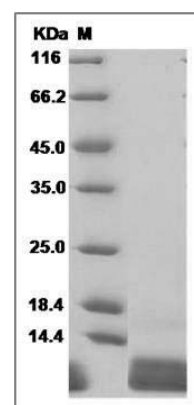
Storage

Store it under sterile conditions at -20°C to -80°C. It is recommended that the protein be aliquoted for optimal storage. Avoid repeated freeze-thaw cycles.

Reconstitution

Adding sterile water, prepare a stock solution of 0.25 mg/ml. Concentration is measured by UV-Vis.

SDS-PAGE



Human CXCL1 / MGSA / NAP-3 Protein SDS-PAGE