

ARHGEF40 antibody



Catalog Number: 108187

Product name

ARHGEF40 antibody

IHC: 1:20-1:200

IF: 1:50-1:500

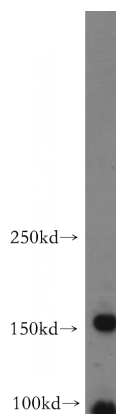
Specificity

Human, Mouse; other species not tested.

Validations

Antibody description

ARHGEF40 Rabbit Polyclonal antibody. Positive IF detected in SH-SY5Y cells. Positive IHC detected in human kidney tissue. Positive WB detected in SH-SY5Y cells, HEK-293 cells, mouse brain tissue, Neuro-2a cells. Observed molecular weight by Western-blot: 150-160 kDa



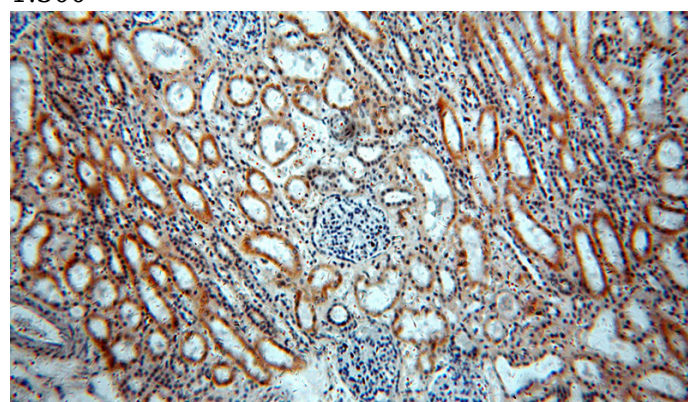
Preparation

This antibody was obtained by immunization of ARHGEF40 recombinant protein (Accession Number: BC000084). Purification method: Antigen affinity purified.

SH-SY5Y cells were subjected to SDS PAGE followed by western blot with Catalog No:108187(FLJ10357 antibody) at dilution of 1:300

Formulation

PBS with 0.02% sodium azide and 50% glycerol pH 7.3.



Storage

Store at -20°C. DO NOT ALIQUOT

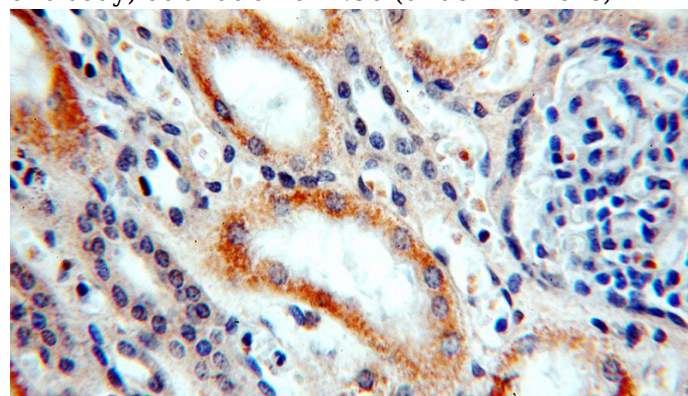
Clonality

Polyclonal

Immunohistochemical of paraffin-embedded human kidney using Catalog No:108187(FLJ10357 antibody) at dilution of 1:50 (under 10x lens)

Ig Type

Rabbit IgG



Applications

ELISA, WB, IHC, IF

Dilutions

Recommended Dilution:

WB: 1:200-1:2000

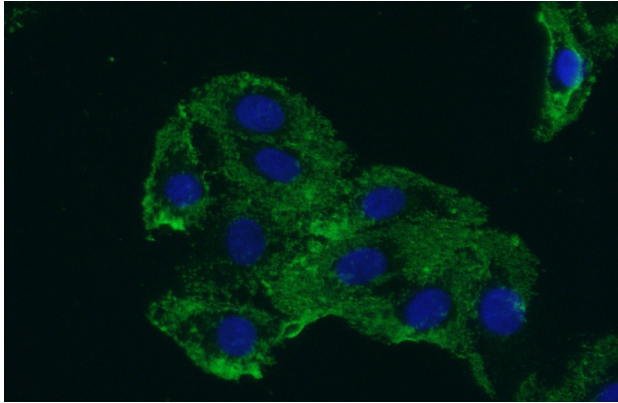
Immunohistochemical of paraffin-embedded

ARHGEF40 antibody



Catalog Number: 108187

human kidney using Catalog No:108187(FLJ10357 antibody) at dilution of 1:50 (under 40x lens)



Immunofluorescent analysis of (-20oc Acetone) fixed SH-SY5Y cells using Catalog No:108187(FLJ10357 Antibody) at dilution of 1:50 and Alexa Fluor 488-conjugated AffiniPure Goat Anti-Rabbit IgG(H+L)