

TMEM38B antibody



Catalog Number: 116187

Product name

TMEM38B antibody

IHC: 1:20-1:200

IF: 1:10-1:100

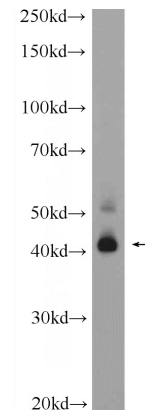
Specificity

Human; other species not tested.

Validations

Antibody description

TMEM38B Rabbit Polyclonal antibody. Positive WB detected in HeLa cells. Positive IHC detected in human kidney tissue, human testis tissue. Positive IF detected in HeLa cells. Observed molecular weight by Western-blot: 40 kDa



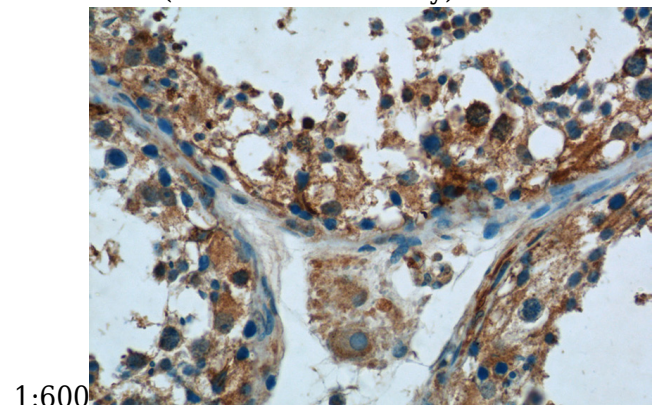
Preparation

This antibody was obtained by immunization of TMEM38B recombinant protein (Accession Number: NM_018112). Purification method: Antigen affinity purified.

HeLa cells were subjected to SDS PAGE followed by western blot with Catalog No:116187(TMEM38B Antibody) at dilution of

Formulation

PBS with 0.1% sodium azide and 50% glycerol pH 7.3.



Storage

Store at -20°C. DO NOT ALIQUOT

Clonality

Polyclonal

Immunohistochemistry of paraffin-embedded human testis tissue slide using Catalog No:116187(TMEM38B Antibody) at dilution of 1:50 (under 40x lens)

Ig Type

Rabbit IgG

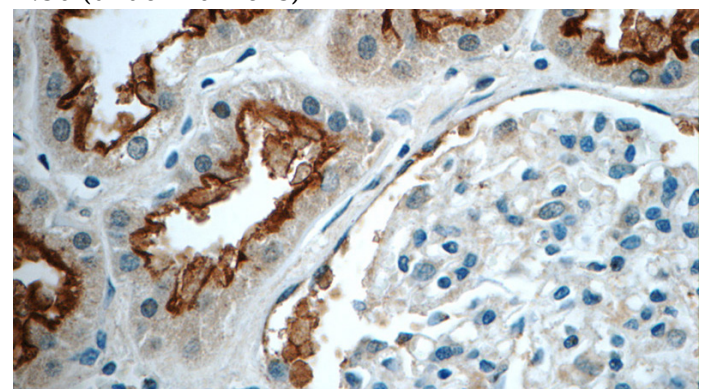
Applications

ELISA, WB, IHC, IF

Dilutions

Recommended Dilution:

WB: 1:200-1:2000

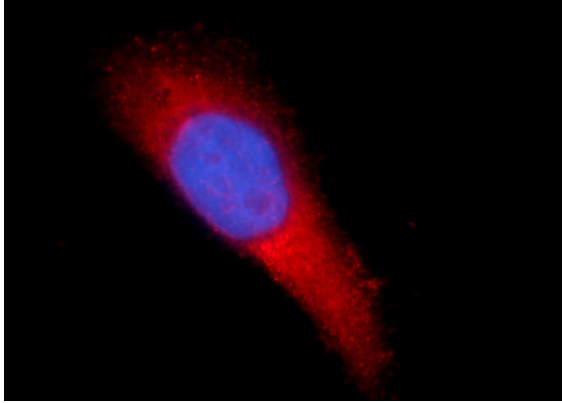


Immunohistochemistry of paraffin-embedded

TMEM38B antibody

Catalog Number: 116187

human kidney tissue slide using Catalog No:116187(TMEM38B Antibody) at dilution of 1:50 (under 40x lens)



Immunofluorescent analysis of HeLa cells using Catalog No:116187(TMEM38B Antibody) at dilution of 1:25 and Alexa Fluor 594-conjugated AffiniPure Goat Anti-Rabbit IgG(H+L)