

PRG2 antibody

Catalog Number: 114187

Product name

PRG2 antibody

Specificity

Human; other species not tested.

Antibody description

PRG2 Rabbit Polyclonal antibody. Positive IHC detected in human breast cancer tissue. Positive WB detected in Transfected HEK-293 cells.

Preparation

This antibody was obtained by immunization of PRG2 recombinant protein (Accession Number: NM_001302926). Purification method: Antigen affinity purified.

Formulation

PBS with 0.1% sodium azide and 50% glycerol pH 7.3.

Storage

Store at -20°C. DO NOT ALIQUOT

Clonality

Polyclonal

Ig Type

Rabbit IgG

Applications

ELISA, IHC, WB

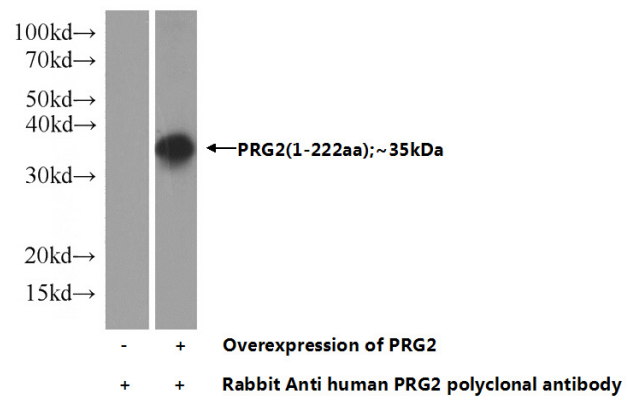
Dilutions

Recommended Dilution:

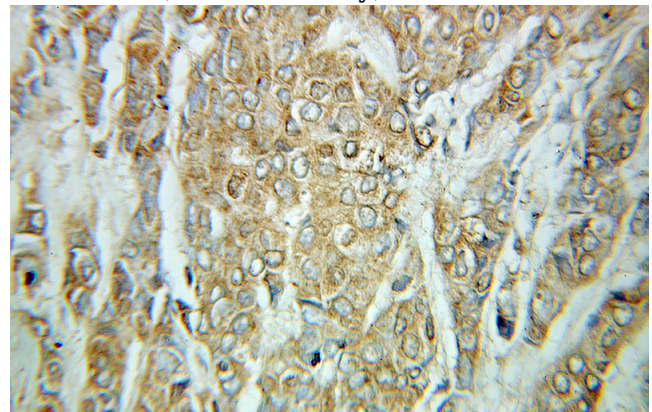
WB: 1:500-1:5000

IHC: 1:20-1:200

Validations



Transfected HEK-293 cells were subjected to SDS PAGE followed by western blot with Catalog No:114187(PRG2 Antibody) at dilution of 1:1000



Immunohistochemical of paraffin-embedded human breast cancer using Catalog No:114187(PRG2 antibody) at dilution of 1:100 (under 10x lens)