

LDHD antibody

Catalog Number: 112187

Product name

LDHD antibody

IHC: 1:20-1:200

IF: 1:20-1:200

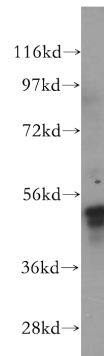
Specificity

Human, Mouse; other species not tested.

Validations

Antibody description

LDHD Rabbit Polyclonal antibody. Positive IHC detected in human osteosarcoma tissue. Positive IF detected in HepG2 cells. Positive WB detected in HepG2 cells, human heart tissue. Observed molecular weight by Western-blot: 52kd and 54kd



Preparation

This antibody was obtained by immunization of LDHD recombinant protein (Accession Number: NM_153486). Purification method: Antigen affinity purified.

HepG2 cells were subjected to SDS PAGE followed by western blot with Catalog No:112187(LDHD antibody) at dilution of 1:100

Formulation

PBS with 0.02% sodium azide and 50% glycerol pH 7.3.

Storage

Store at -20°C. DO NOT ALIQUOT

Clonality

Polyclonal

Ig Type

Rabbit IgG

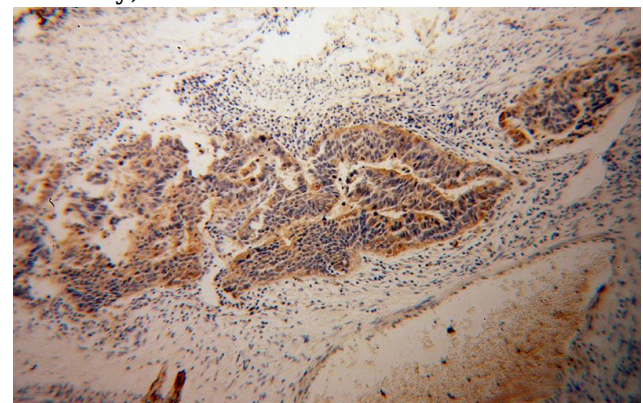
Applications

ELISA, WB, IHC, IF

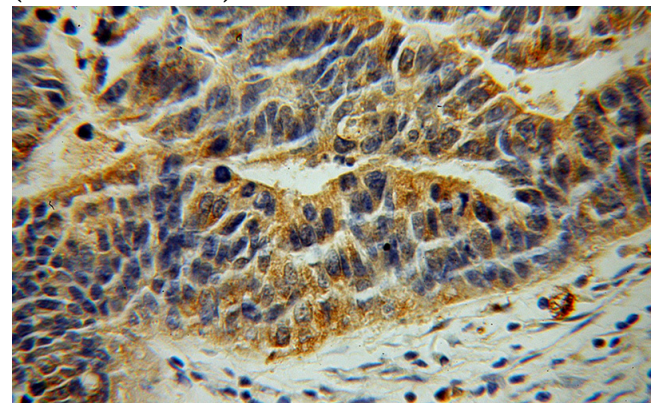
Dilutions

Recommended Dilution:

WB: 1:200-1:1000



Immunohistochemical of paraffin-embedded human osteosarcoma using Catalog No:112187(LDHD antibody) at dilution of 1:50 (under 10x lens)

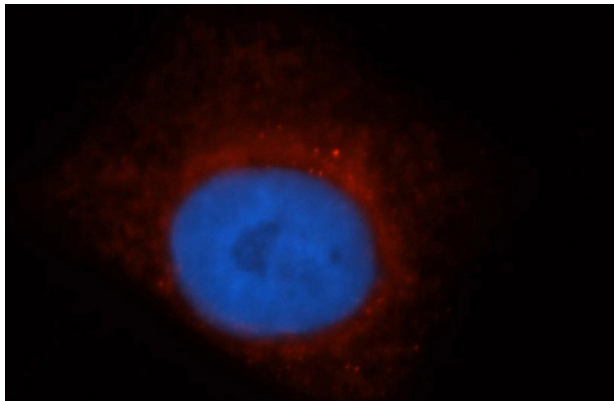


Immunohistochemical of paraffin-embedded

LDHD antibody

Catalog Number: 112187

human osteosarcoma using Catalog No:112187(LDHD antibody) at dilution of 1:50 (under 40x lens)



Immunofluorescent analysis of HepG2 cells, using LDHD antibody Catalog No:112187 at 1:50 dilution and Rhodamine-labeled goat anti-rabbit IgG (red). Blue pseudocolor = DAPI (fluorescent DNA dye).