

YME1L1 antibody

Catalog Number: 116887

Product name

YME1L1 antibody

IHC: 1:20-1:200

IF: 1:10-1:100

Specificity

Human, Mouse, Rat; other species not tested.

Antibody description

YME1L1 Rabbit Polyclonal antibody. Positive WB detected in mouse heart tissue. Positive IHC detected in human colon cancer tissue. Positive IF detected in HepG2 cells. Observed molecular weight by Western-blot: 86kd

Preparation

This antibody was obtained by immunization of YME1L1 recombinant protein (Accession Number: NM_014263). Purification method: Antigen affinity purified.

Formulation

PBS with 0.1% sodium azide and 50% glycerol pH 7.3.

Storage

Store at -20°C. DO NOT ALIQUOT

Clonality

Polyclonal

Ig Type

Rabbit IgG

Applications

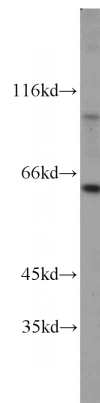
ELISA, WB, IHC, IF

Dilutions

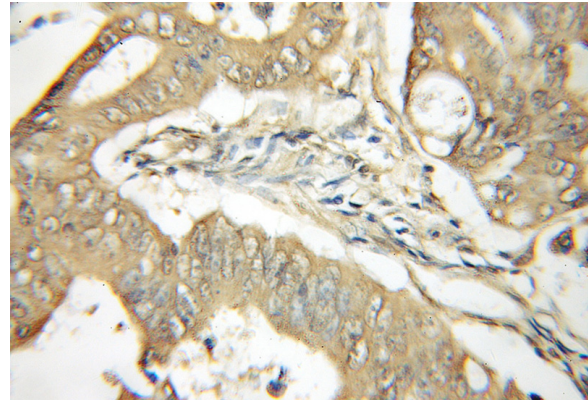
Recommended Dilution:

WB: 1:200-1:2000

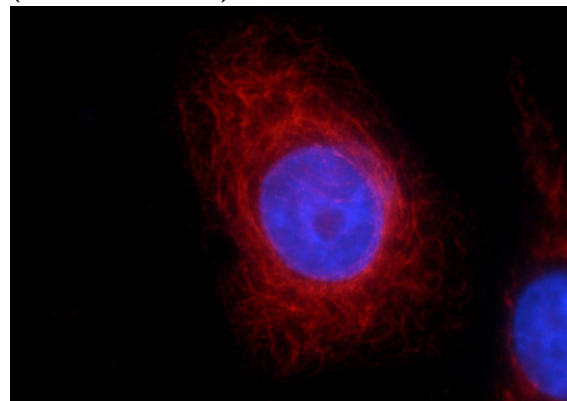
Validations



mouse heart tissue were subjected to SDS PAGE followed by western blot with Catalog No:116887(YME1L1 antibody) at dilution of 1:300



Immunohistochemical of paraffin-embedded human colon cancer using Catalog No:116887(YME1L1 antibody) at dilution of 1:50 (under 10x lens)



Immunofluorescent analysis of HepG2 cells using

YME1L1 antibody



Catalog Number: 116887

Catalog No:116887(YME1L1 Antibody) at dilution of 1:25 and Rhodamine-Goat anti-Rabbit IgG