

# Anti-c-Jun Rabbit antibody



Catalog Number: 166887

## Product name

Anti-c-Jun Rabbit antibody

## Specificity

Human, Mouse, Rat

## Antibody description

c-Jun Rabbit polyclonal antibody

## Preparation

Antigen: A synthesized peptide derived from human c-Jun

## Formulation

Rabbit IgG in phosphate buffered saline , pH 7.4, 150mM NaCl, 0.02% sodium azide and 50% glycerol.

## Storage

Store at 4°C short term. Store at -20°C long term. Avoid freeze / thaw cycle.

## Clonality

Polyclonal

## Ig Type

Rabbit IgG

## Applications

WB, IHC-P, ICC/IF, IP

## Dilutions

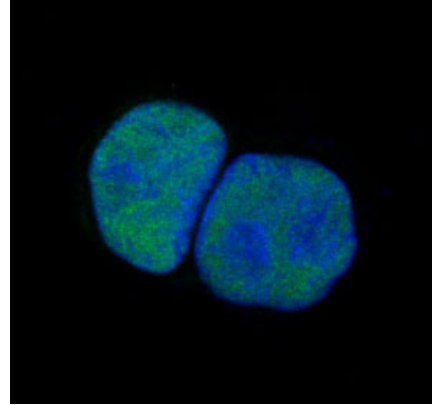
WB: 1/500-1/2000

IHC: 1/50-1/200

ICC/IF: 1/50-1/200

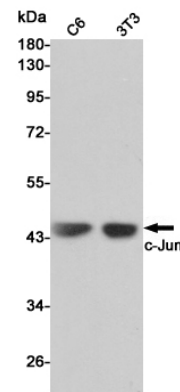
IP: 1/50

## Validations

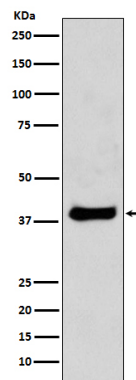


Immunofluorescent analysis of HeLa cells, using c-

Jun Antibody .



Western blot analysis of c-Jun expression in C6 and 3T3 cell lysates using c-Jun antibody at 1/1000 dilution. Predicted band size: 43KDa. Observed band size: 43KDa.



Western blot analysis of c-jun expression in NIH/3T3 cell lysates.