

SOAT2 antibody



Catalog Number: 115487

Product name

SOAT2 antibody

IHC: 1:20-1:200

IF: 1:20-1:200

Specificity

Human; other species not tested.

Antibody description

SOAT2 Rabbit Polyclonal antibody. Positive IF detected in HeLa cells. Positive IHC detected in human small intestine tissue, human liver tissue. Positive WB detected in HeLa cells, L02 cells. Observed molecular weight by Western-blot: 46 kDa

Preparation

This antibody was obtained by immunization of SOAT2 recombinant protein (Accession Number: NM_003578). Purification method: Antigen affinity purified.

Formulation

PBS with 0.02% sodium azide and 50% glycerol pH 7.3.

Storage

Store at -20°C. DO NOT ALIQUOT

Clonality

Polyclonal

Ig Type

Rabbit IgG

Applications

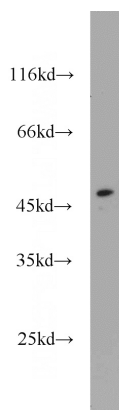
ELISA, WB, IHC, IF

Dilutions

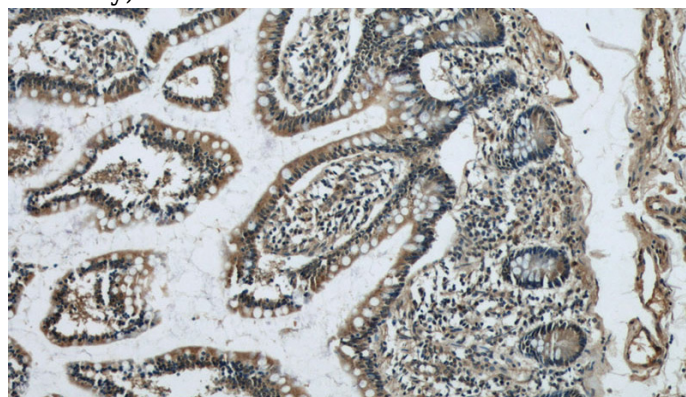
Recommended Dilution:

WB: 1:500-1:5000

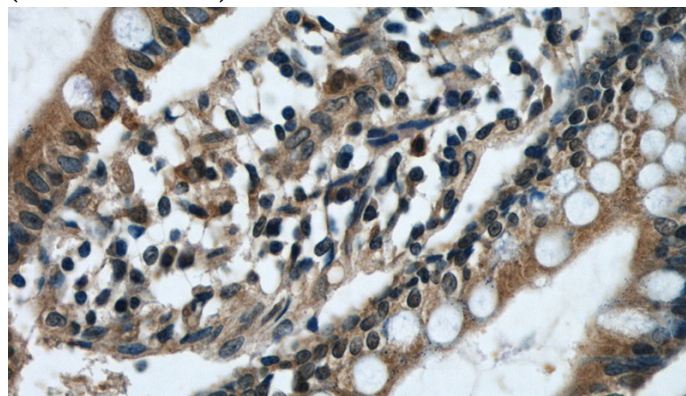
Validations



HeLa cells were subjected to SDS PAGE followed by western blot with Catalog No:115487(SOAT2 antibody) at dilution of 1:1000



Immunohistochemical of paraffin-embedded human small intestine using Catalog No:115487(SOAT2 antibody) at dilution of 1:50 (under 10x lens)



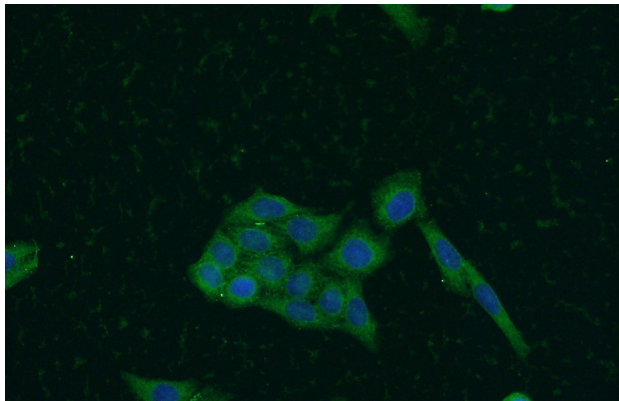
Immunohistochemical of paraffin-embedded

SOAT2 antibody



Catalog Number: 115487

human small intestine using Catalog No:115487(SOAT2 antibody) at dilution of 1:50 (under 40x lens)



Immunofluorescent analysis of HeLa cells using Catalog No:115487(SOAT2 Antibody) at dilution of 1:50 and Alexa Fluor 488-conjugated AffiniPure Goat Anti-Rabbit IgG(H+L)