

## General Information

### Gene Name Synonym

Uncharacterized protein

### Protein Construction

A DNA sequence encoding the canine IL17A (NP\_001159350.1)(Gly26-Ala155) was expressed with a N-terminal Met.

### Organism

Canine

### Expression Host

E. coli

## QC Testing

### Activity

1. Measured by its binding ability in a functional ELISA. Immobilized Canine IL17A (cat: 500487) at 10 µg/ml (100 µl/well) can bind human IL17Ra (Cat:503306), The EC<sub>50</sub> of human IL17Ra (Cat:503306) is 6.0-15.0 ng/ml.
2. Measured by its ability to induce IL-6 secretion by HFF human foreskin fibroblast cells. The ED<sub>50</sub> for this effect is typically 1-5 ng/mL.

### Purity

> 95 % as determined by SDS-PAGE

### Endotoxin

Please contact us for more information.

### Stability

Samples are stable for up to twelve months from date of receipt at -70°C

### Predicted N terminal

Met

### Molecular Mass

The recombinant canine IL17A comprises 131 amino acids and has a predicted molecular mass of 15.2 kDa. The apparent molecular mass of the protein is approximately 15 kDa in SDS-PAGE under reducing conditions due to glycosylation.

### Formulation

Lyophilized from sterile PBS, pH 7.4.

1. 5 % trehalose and mannitol are added as protectants before lyophilization.

2. Please contact us for any concerns or special requirements.

## Usage Guide

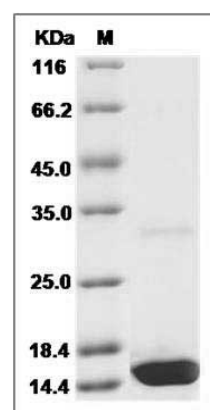
### Storage

Store it under sterile conditions at -20°C to -80°C. It is recommended that the protein be aliquoted for optimal storage. Avoid repeated freeze-thaw cycles.

### Reconstitution

Adding sterile water, prepare a stock solution of 0.25 mg/ml. Concentration is measured by UV-Vis.

### SDS-PAGE



Canine IL17 / IL17A Protein SDS-PAGE