

# beta Actin antibody



Catalog Number: 107087

## Product name

beta Actin antibody

## Specificity

Human, Mouse, Rat, Zebrafish, Pig, yeast; other species not tested.

## Antibody description

beta Actin Mouse Monoclonal antibody. Positive WB detected in multi-cells/tissue, A549 cells, arabidopsis whole plant tissue, HEK-293 cells, HeLa cells, MCF7 cells, whole Nematode tissue, whole yeast cells. Positive IHC detected in human kidney tissue, human brain tissue, human colon tissue, human heart tissue, human lung tissue, human ovary tissue, human placenta tissue, human spleen tissue, human testis tissue. Positive IF detected in HepG2 cells. Positive FC detected in HepG2 cells. Observed molecular weight by Western-blot: 42 kDa

## Preparation

This antibody was obtained by immunization of beta Actin recombinant protein (Accession Number: NM\_001101). Purification method: Caprylic acid/ammonium sulfate precipitation.

## Formulation

PBS with 0.1% sodium azide and 50% glycerol pH 7.3.

## Storage

Store at -20°C. DO NOT ALIQUOT

## Clonality

Monoclonal

## Ig Type

Mouse IgM

## Applications

ELISA, IHC, WB, IF, FC

## Dilutions

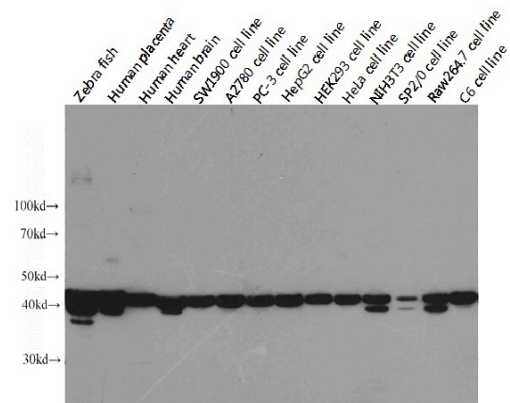
Recommended Dilution:

WB: 1:2000-1:20000

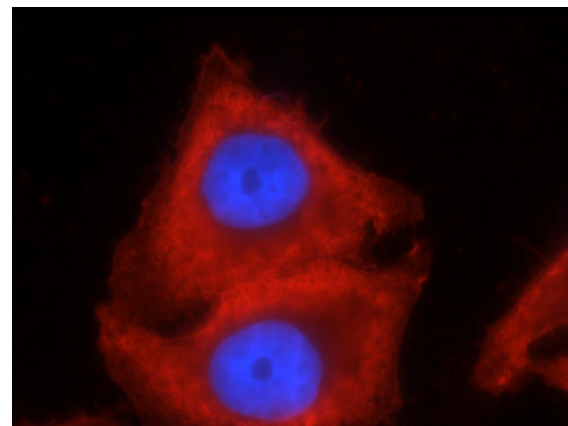
IHC: 1:20-1:200

IF: 1:20-1:200

## Validations



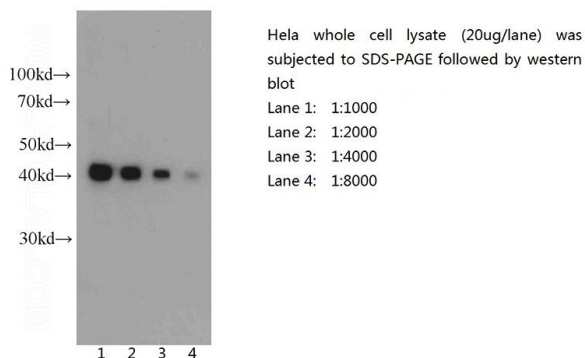
Western blot analysis of Beta-actin in various tissues and cell lines using Proteintech antibody Catalog No:117304 at a dilution of 1:5000. Extra bands were detected in some species with unknown reason.



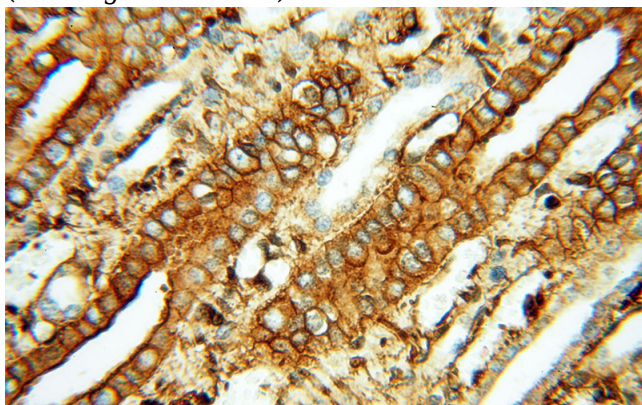
Immunofluorescent analysis of HepG2 cells using Catalog No:117304 (beta actin Antibody) at dilution of 1:50 and Rhodamine-labeled goat anti-mouse IgG (red).

# beta Actin antibody

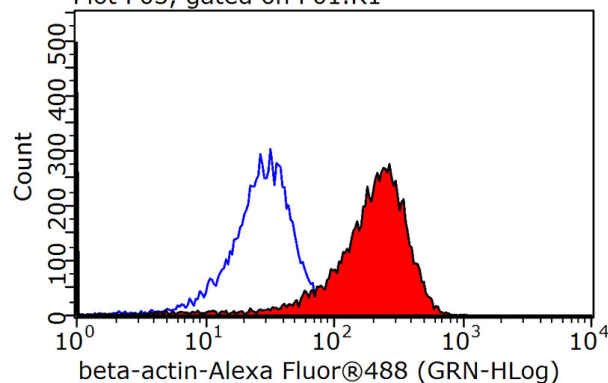
Catalog Number: 107087



Western blot of Hela cell with anti-Actin-Beta (Catalog No:117304) at various dilutions.



Immunohistochemical of paraffin-embedded human kidney using Catalog No:117304(ACTB antibody) at dilution of 1:100 (under 40x lens)  
Plot P03, gated on P01.R1



1X10<sup>6</sup> HepG2 cells were stained with 0.2ug beta actin antibody (Catalog No:117304, red) and control antibody (blue). Fixed with 90% MeOH blocked with 3% BSA (30 min). Alexa Fluor 488-conjugated AffiniPure Goat Anti-Mouse IgG(H+L) with dilution 1:1000.