

# KLHDC5 antibody

Catalog Number: 112087

## Product name

KLHDC5 antibody

## Specificity

Human, Mouse; other species not tested.

## Antibody description

KLHDC5 Rabbit Polyclonal antibody. Positive IF detected in HeLa cells. Positive WB detected in HeLa cells, mouse brain tissue. Observed molecular weight by Western-blot: 56 kDa

## Preparation

This antibody was obtained by immunization of KLHDC5 recombinant protein (Accession Number: NM\_020782). Purification method: Antigen affinity purified.

## Formulation

PBS with 0.1% sodium azide and 50% glycerol pH 7.3.

## Storage

Store at -20°C. DO NOT ALIQUOT

## Clonality

Polyclonal

## Ig Type

Rabbit IgG

## Applications

ELISA, WB, IF

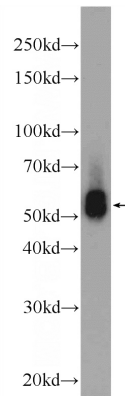
## Dilutions

Recommended Dilution:

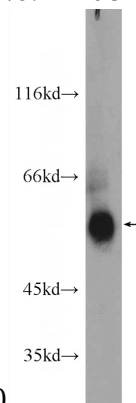
WB: 1:500-1:5000

IF: 1:20-1:200

## Validations

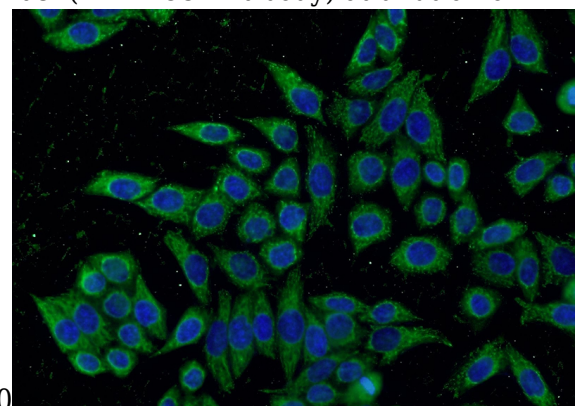


HeLa cells were subjected to SDS PAGE followed by western blot with Catalog No:112087(KLHDC5



Antibody) at dilution of 1:1000

mouse brain tissue were subjected to SDS PAGE followed by western blot with Catalog No:112087(KLHDC5 Antibody) at dilution of



1:1000 Immunofluorescent analysis of HeLa cells using Catalog No:112087(KLHDC5 Antibody) at dilution of 1:50 and Alexa Fluor 488-conjugated AffiniPure Goat Anti-Rabbit IgG(H+L)