

Anti-Phospho-CDK2 (Tyr15) Rabbit antibody



Catalog Number: 168777

Product name

Anti-Phospho-CDK2 (Tyr15) Rabbit antibody

Ig Type

Rabbit IgG

Specificity

Human, Mouse, Rat

Applications

WB, IP

Antibody description

Phospho-CDK2 (Tyr15) Rabbit monoclonal antibody

Dilutions

WB: 1/1000

IP: 1/20

Preparation

Antigen: A synthetic phosphopeptide corresponding to residues surrounding Tyr15 of human Cdk2

Formulation

Supplied in 50nM Tris-Glycine(pH 7.4), 0.15M NaCl, 40%Glycerol, 0.01% sodium azide and 0.05% BSA.

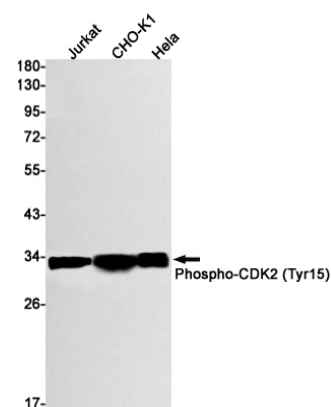
Storage

Store at 4°C short term. Aliquot and store at -20°C long term. Avoid freeze / thaw cycle.

Clonality

Monoclonal

Validations



Western blot detection of Phospho-CDK2 (Tyr15) in Jurkat, CHO-K1, HeLa cell lysates using Phospho-CDK2 (Tyr15) Rabbit mAb(1:1000 diluted). Predicted band size: 34kDa. Observed band size: 34kDa.