

MTHFD1L antibody



Catalog Number: 112777

Product name

MTHFD1L antibody

IP: 1:500-1:5000

IHC: 1:20-1:200

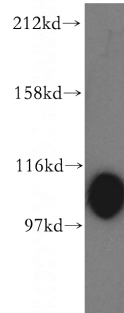
Specificity

Human, Mouse, Rat; other species not tested.

Antibody description

MTHFD1L Rabbit Polyclonal antibody. Positive WB detected in HepG2 cells, COLO 320 cells, HeLa cells, mouse ovary tissue. Positive IP detected in HeLa cells. Positive IHC detected in human colon cancer tissue. Observed molecular weight by Western-blot: 106kd

Validations



Preparation

This antibody was obtained by immunization of MTHFD1L recombinant protein (Accession Number: BC017477). Purification method: Antigen affinity purified.

HepG2 cells were subjected to SDS PAGE followed by western blot with Catalog No:112777(MTHFD1L antibody) at dilution of 1:500

Formulation

PBS with 0.02% sodium azide and 50% glycerol pH 7.3.

Storage

Store at -20°C. DO NOT ALIQUOT

Clonality

Polyclonal

Ig Type

Rabbit IgG

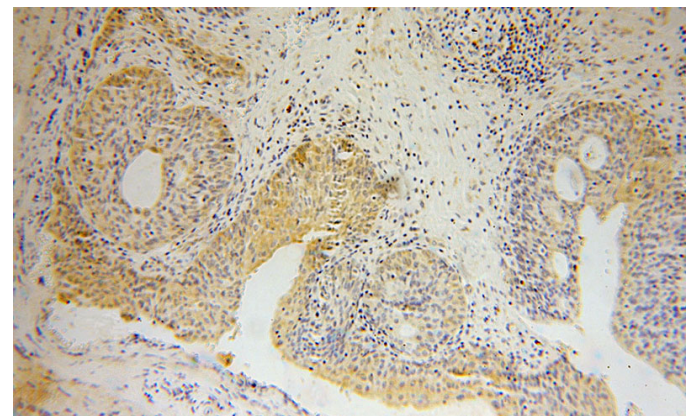
Applications

ELISA, WB, IHC, IP

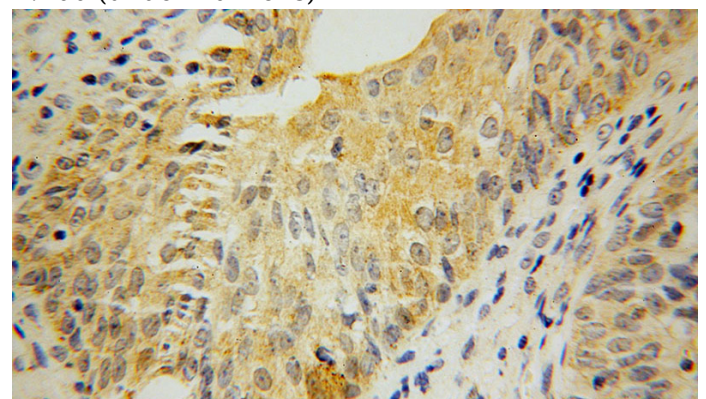
Dilutions

Recommended Dilution:

WB: 1:500-1:5000



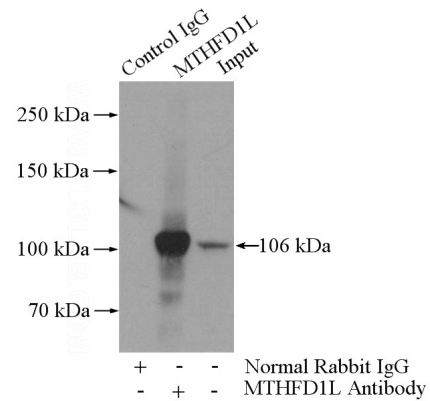
Immunohistochemical of paraffin-embedded human colon cancer using Catalog No:112777(MTHFD1L antibody) at dilution of 1:100 (under 10x lens)



MTHFD1L antibody

Catalog Number: 112777

Immunohistochemical of paraffin-embedded human colon cancer using Catalog No:112777(MTHFD1L antibody) at dilution of 1:100 (under 40x lens)



IP Result of anti-MTHFD1L (IP:Catalog No:112777, 4ug; Detection:Catalog No:112777 1:1000) with HeLa cells lysate 2000ug.