

# Anti-Cyclophilin F Rabbit antibody



Catalog Number: 167377

## Product name

Anti-Cyclophilin F Rabbit antibody

## Specificity

Human, Mouse, Rat

## Antibody description

Cyclophilin F Rabbit polyclonal antibody

## Preparation

Antigen: A synthetic peptide of human Cyclophilin F

## Formulation

Supplied in 50nM Tris-Glycine(pH 7.4), 0.15M NaCl, 40%Glycerol, 0.01% sodium azide and 0.05% BSA.

## Storage

Store at -20°C. Stable for 12 months from date of receipt.

## Clonality

Polyclonal

## Ig Type

Rabbit IgG

## Applications

WB, IHC-P, FC

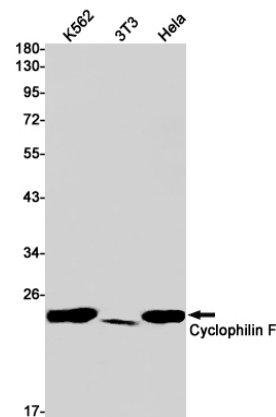
## Dilutions

WB: 1/1000

IHC: 1/500

FC: 1/100

## Validations



Western blot detection of Cyclophilin F in K562,3T3,HeLa cell lysates using Cyclophilin F Rabbit pAb(1:1000 diluted).Predicted band size:22kDa.Observed band size:18kDa.