

Anti-ZBTB40 antibody



Catalog Number: 176377

Product name

Rabbit IgG

Anti-ZBTB40 antibody

Applications

Specificity

WB, IHC-P

Human, Mouse

Dilutions

Antibody description

WB: 1:500-1:2000

Rabbit polyclonal antibody to ZBTB40

IHC-P: 1:100-1:300

Preparation

This antigen of this antibody was the antiserum was produced against synthesized peptide derived from human zbtb40. aa range:1121-1170

Validations

Formulation

Liquid, Liquid in PBS containing 50% glycerol, 0.5% BSA and 0.02% sodium azide.

Storage

Store at +4°C after thawing. Aliquot store at -20°C or -80°C. Avoid repeated freeze / thaw cycles.

Clonality

Polyclonal

Ig Type

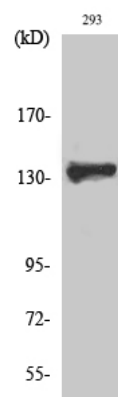


Fig1;; Western Blot analysis of various cells using ZBTB40 Polyclonal Antibody. Secondary antibody [catalog#: HA1001) was diluted at 1:20000 cells nucleus extracted by Minute TM Cytoplasmic and Nuclear Fractionation kit (SC-003, Invent biotech, MN, USA).