

Anti-RPS6 Rabbit antibody

Catalog Number: 166677

Product name

Anti-RPS6 Rabbit antibody

Specificity

Human, Mouse, Rat

Antibody description

RPS6 Rabbit polyclonal antibody

Preparation

Antigen: Peptide sequence around aa.233-238(R-L-S-S-L-R) derived from Human S6 Ribosomal Protein.

Formulation

Supplied at 1.0mg/mL in phosphate buffered saline (without Mg²⁺ and Ca²⁺), pH 7.4, 150mM NaCl, 0.02% sodium azide and 50% glycerol.

Storage

Store at 4°C short term. Store at -20°C long term. Avoid freeze / thaw cycle.

Clonality

Polyclonal

Ig Type

Rabbit IgG

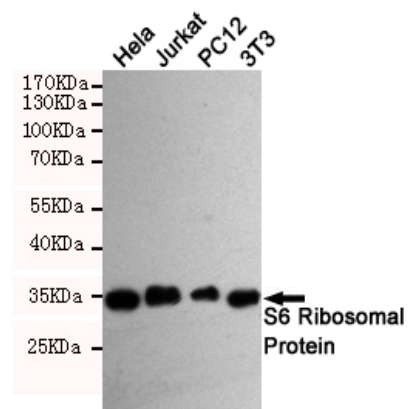
Applications

WB

Dilutions

WB:1/1000

Validations



Western blot analysis of extracts from HeLa, 3T3, Jurkat and PC12 cells using S6 Ribosomal Protein (Ab-235/236) rabbit pAb (dilution 1:1000). Predicted band size: 32 kDa. Observed band size: 32 kDa.