

PDGFRL antibody



Catalog Number: 113677

Product name

PDGFRL antibody

IHC: 1:20-1:200

IF: 1:20-1:200

Specificity

Human, Mouse, Rat; other species not tested.

Antibody description

PDGFRL Rabbit Polyclonal antibody. Positive WB detected in L02 cells, mouse liver tissue. Positive FC detected in HepG2 cells. Positive IHC detected in human liver cancer tissue, mouse liver tissue. Positive IF detected in L02 cells. Observed molecular weight by Western-blot: 42 kDa

Preparation

This antibody was obtained by immunization of PDGFRL recombinant protein (Accession Number: NM_001372073). Purification method: Antigen affinity purified.

Formulation

PBS with 0.1% sodium azide and 50% glycerol pH 7.3.

Storage

Store at -20°C. DO NOT ALIQUOT

Clonality

Polyclonal

Ig Type

Rabbit IgG

Applications

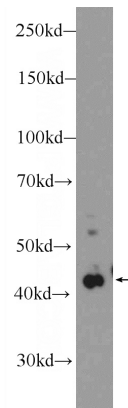
ELISA, WB, IHC, IF, FC

Dilutions

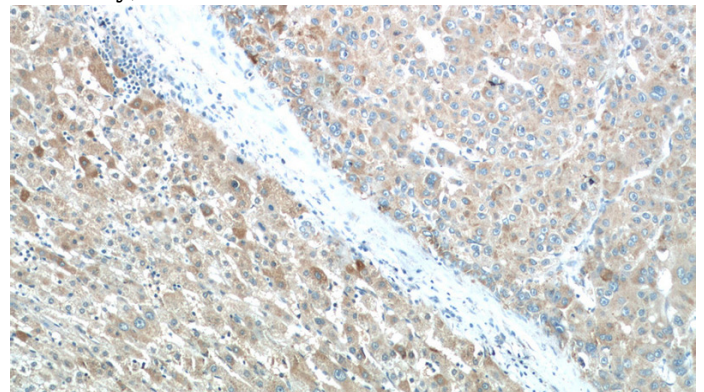
Recommended Dilution:

WB: 1:200-1:2000

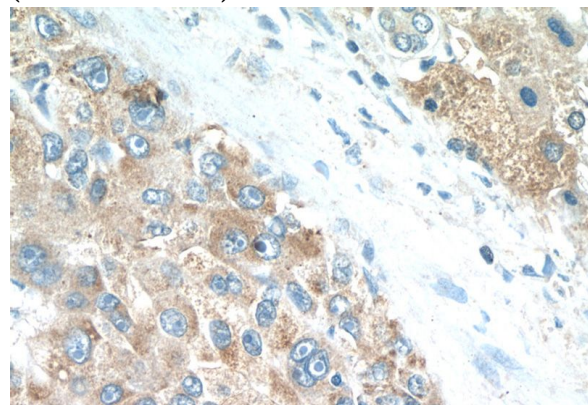
Validations



L02 cells were subjected to SDS PAGE followed by western blot with Catalog No:113677(PDGFRL Antibody) at dilution of 1:600



Immunohistochemistry of paraffin-embedded human liver cancer tissue slide using Catalog No:113677(PDGFRL Antibody) at dilution of 1:50 (under 10x lens)

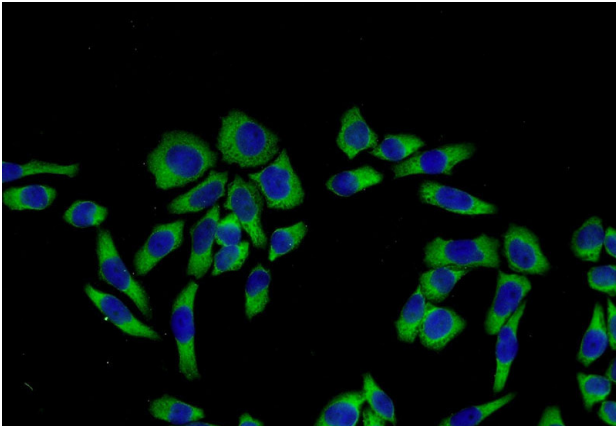


Immunohistochemistry of paraffin-embedded

PDGFRL antibody

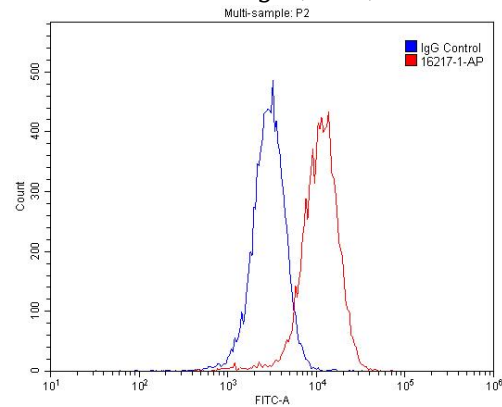
Catalog Number: 113677

human liver cancer tissue slide using Catalog No:113677(PDGFRL Antibody) at dilution of 1:50 (under 40x lens)



Immunofluorescent analysis of L02 cells using Catalog No:113677(PDGFRL Antibody) at dilution of 1:50 and Alexa Fluor 488-conjugated AffiniPure

Goat Anti-Rabbit IgG(H+L)



1X10⁶ HepG2 cells were stained with .2ug PDGFRL antibody (Catalog No:113677, red) and control antibody (blue). Fixed with 4% PFA blocked with 3% BSA (30 min). Alexa Fluor 488-conjugated AffiniPure Goat Anti-Rabbit IgG(H+L) with dilution 1:1500.