

# ATAD2 antibody

Catalog Number: 108277

## Product name

ATAD2 antibody

IP: 1:200-1:2000

IF: 1:50-1:500

## Specificity

Human; other species not tested.

## Antibody description

ATAD2 Rabbit Polyclonal antibody. Positive IF detected in HeLa cells. Positive WB detected in HeLa cells. Positive IP detected in HeLa cells. Observed molecular weight by Western-blot: 159 kDa

## Preparation

This antibody was obtained by immunization of ATAD2 recombinant protein (Accession Number: NM\_014109). Purification method: Antigen Affinity purified.

## Formulation

PBS with 0.02% sodium azide and 50% glycerol pH 7.3.

## Storage

Store at -20°C. DO NOT ALIQUOT

## Clonality

Polyclonal

## Ig Type

Rabbit IgG

## Applications

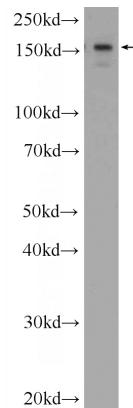
ELISA, WB, IP, IF

## Dilutions

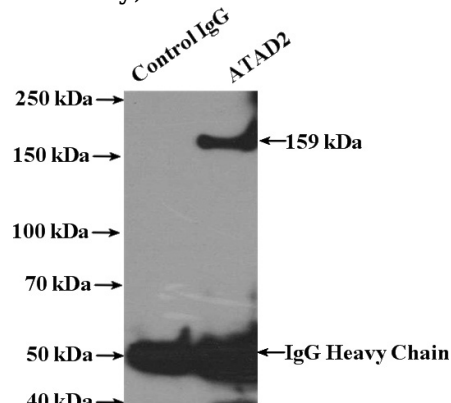
Recommended Dilution:

WB: 1:200-1:2000

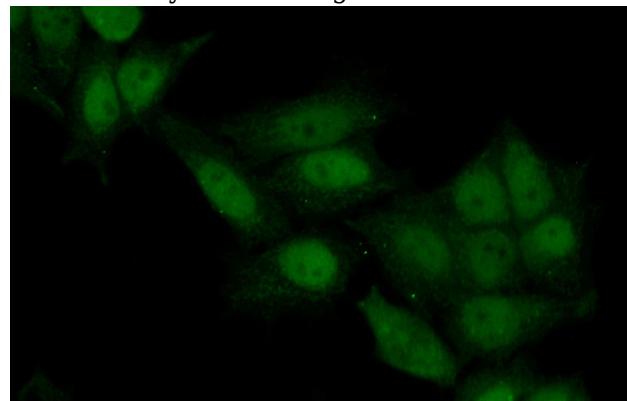
## Validations



HeLa cells were subjected to SDS PAGE followed by western blot with Catalog No:108277(ATAD2 Antibody) at dilution of 1:600



IP Result of anti-ATAD2 (IP:Catalog No:108277, 4ug; Detection:Catalog No:108277 1:500) with HeLa cells lysate 3200ug.



Immunofluorescent analysis of (10% Formaldehyde) fixed HeLa cells using Catalog

# ATAD2 antibody



Catalog Number: 108277

---

No:108277(ATAD2 Antibody) at dilution of 1:50

and Alexa Fluor 488-conjugated AffiniPure Goat  
Anti-Rabbit IgG(H+L)