

# IFITM3 antibody

Catalog Number: 107277

## Product name

IFITM3 antibody

IHC: 1:20-1:200

IF: 1:10-1:100

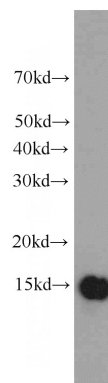
## Specificity

Human; other species not tested.

## Validations

## Antibody description

IFITM3 Mouse Monoclonal antibody. Positive WB detected in Hela cells, human placenta tissue. Positive FC detected in HeLa cells. Positive IHC detected in human lung cancer tissue. Positive IF detected in HepG2 cells. Observed molecular weight by Western-blot: 14 kDa



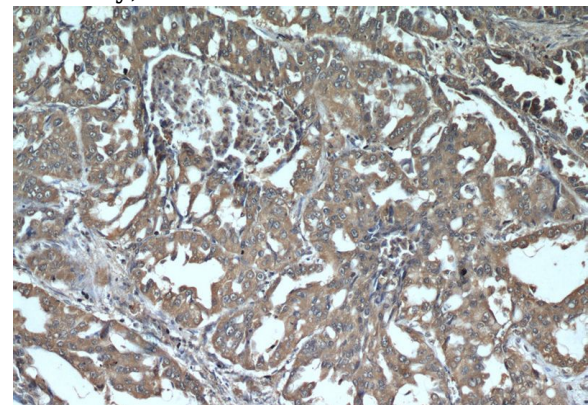
## Preparation

This antibody was obtained by immunization of IFITM3 recombinant protein (Accession Number: NM\_021034). Purification method: Protein G purified.

HeLa cells were subjected to SDS PAGE followed by western blot with Catalog No:107277(IFITM3 antibody) at dilution of 1:1000

## Formulation

PBS with 0.02% sodium azide and 50% glycerol pH 7.3.



## Storage

Store at -20°C. DO NOT ALIQUOT

## Clonality

Monoclonal

Immunohistochemical of paraffin-embedded human lung cancer using Catalog No:107277(IFITM3 antibody) at dilution of 1:50 (under 10x lens)

## Ig Type

Mouse IgG1

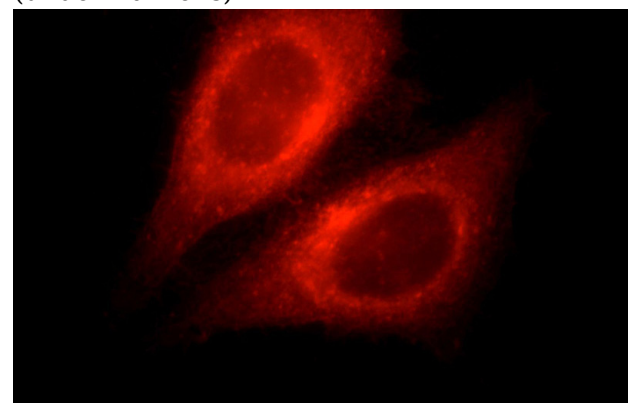
## Applications

ELISA, WB, IF, IHC, FC

## Dilutions

Recommended Dilution:

WB: 1:500-1:5000



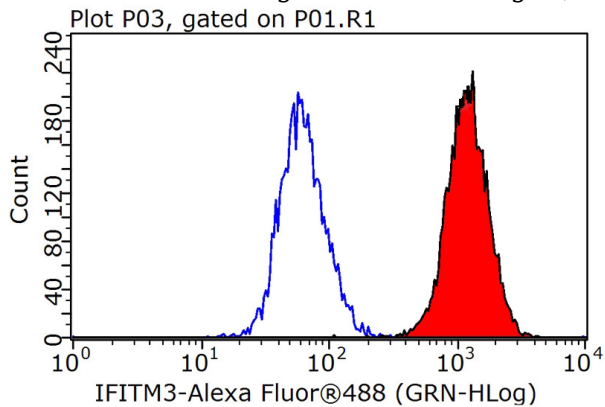
Immunofluorescent analysis of HepG2 cells, using

# IFITM3 antibody



Catalog Number: 107277

IFITM3 antibody Catalog No: at 1:25 dilution and Rhodamine-labeled goat anti-mouse IgG (red).



1X10<sup>6</sup> HeLa cells were stained with 0.2ug IFITM2/3 antibody (Catalog No:107277, red) and control antibody (blue). Fixed with 90% MeOH blocked with 3% BSA (30 min). Alexa Fluor 488-conjugated AffiniPure Goat Anti-Mouse IgG(H+L) with dilution 1:1000.