

Anti-PTX3 antibody



Catalog Number: 176277

Product name

Anti-PTX3 antibody

Specificity

Human, Mouse

Antibody description

Rabbit polyclonal antibody to PTX3

Preparation

This antigen of this antibody was the antiserum was produced against synthesized peptide derived from human ptx3. aa range:1-50

Formulation

Liquid, Liquid in PBS containing 50% glycerol, 0.5% BSA and 0.02% sodium azide.

Storage

Store at +4°C after thawing. Aliquot store at -20°C or -80°C. Avoid repeated freeze / thaw cycles.

Clonality

Polyclonal

Ig Type

Rabbit IgG

Applications

WB, IHC-P, IF

Dilutions

WB: 1:500-1:2000

IHC-P: 1:100-1:300

IF: 1:100-1:500

Validations

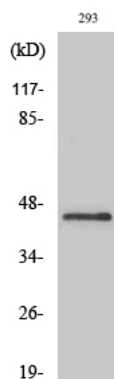


Fig1.;; Western Blot analysis of various cells using Ptx3 Polyclonal Antibody diluted at 1: 1000