

# NRF2, NFE2L2 antibody



Catalog Number: 113277

## Product name

NRF2, NFE2L2 antibody

## Immunogen

[Human NRF2, NFE2L2 Recombinant protein \(GST tag\)](#)

## Specificity

Human, Mouse, Rat; other species not tested.

## Antibody description

NRF2, NFE2L2 Rabbit Polyclonal antibody. Positive IHC detected in human breast cancer tissue, human colon cancer tissue, human kidney tissue, human liver cancer tissue, human ovary tumor tissue. Positive FC detected in MCF-7 cells. Positive WB detected in DMSO treated HeLa cells, MG132 HeLa cells. Positive IP detected in mouse kidney tissue. Observed molecular weight by Western-blot: 70-100 kDa

## Preparation

This antibody was obtained by immunization of NRF2, NFE2L2 recombinant protein (Accession Number: NM\_006164). Purification method: Antigen affinity purified.

## Formulation

PBS with 0.1% sodium azide and 50% glycerol pH 7.3.

## Storage

Store at -20°C. DO NOT ALIQUOT

## Clonality

Polyclonal

## Ig Type

Rabbit IgG

## Applications

ELISA, WB, IHC, FC, IP

## Dilutions

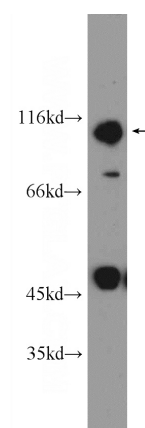
Recommended Dilution:

WB: 1:200-1:2000

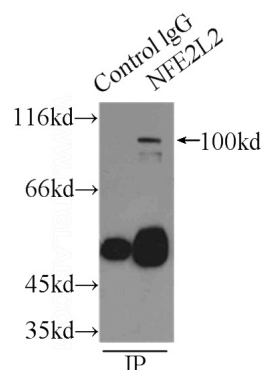
IP: 1:200-1:1000

IHC: 1:20-1:200

## Validations



DMSO treated HeLa cells were subjected to SDS PAGE followed by western blot with Catalog No:113277(NRF2, NFE2L2 Antibody) at dilution of



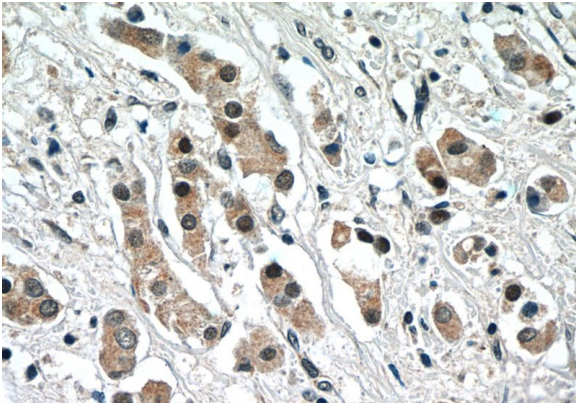
1:600

IP Result of anti-NRF2, NFE2L2 (IP:Catalog No:113277, 3ug; Detection:Catalog No:113277 1:300) with mouse kidney tissue lysate 4000ug.

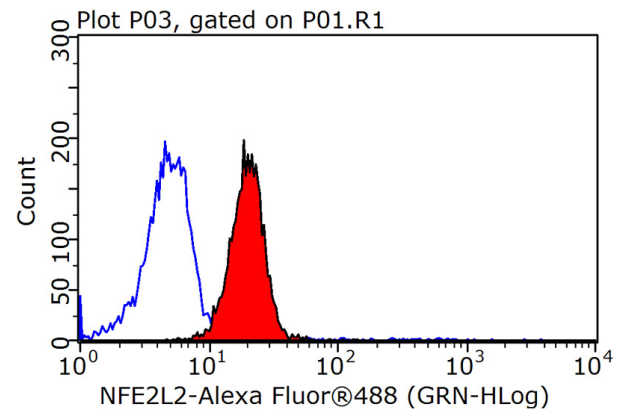
# NRF2, NFE2L2 antibody



Catalog Number: 113277



Immunohistochemistry of paraffin-embedded human breast cancer tissue slide using Catalog No:113277(NRF2, NFE2L2 Antibody) at dilution of 1:50 (under 40x lens)



1X10<sup>6</sup> MCF-7 cells were stained with 0.2ug NRF2, NFE2L2 antibody (Catalog No:113277, red) and control antibody (blue). Fixed with 90% MeOH blocked with 3% BSA (30 min). Alexa Fluor 488-conjugated AffiniPure Goat Anti-Rabbit IgG(H+L) with dilution 1:1500.