

LAMP2 antibody

Catalog Number: 112277

Product name

LAMP2 antibody

Specificity

Human, Mouse; other species not tested.

Antibody description

LAMP2 Rabbit Polyclonal antibody. Positive IF detected in HepG2 cells. Positive IHC detected in human lung cancer tissue, human colon cancer tissue, human placenta tissue, human skeletal muscle tissue. Positive FC detected in HepG2 cells. Positive WB detected in L02 cells, HEK-293 cells, HeLa cells, HepG2 cells, HT-1080 cells, human placenta tissue, K-562 cells, mouse kidney tissue, mouse skeletal muscle tissue, NIH/3T3 cells, RAW 264.7 cells. Observed molecular weight by Western-blot: 50-55 kDa

Preparation

This antibody was obtained by immunization of LAMP2 recombinant protein (Accession Number: NM_013995). Purification method: Antigen affinity purified.

Formulation

PBS with 0.1% sodium azide and 50% glycerol pH 7.3.

Storage

Store at -20°C. DO NOT ALIQUOT

Clonality

Polyclonal

Ig Type

Rabbit IgG

Applications

ELISA, WB, IF, FC, IHC

Dilutions

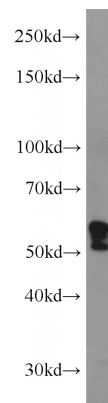
Recommended Dilution:

WB: 1:200-1:1000

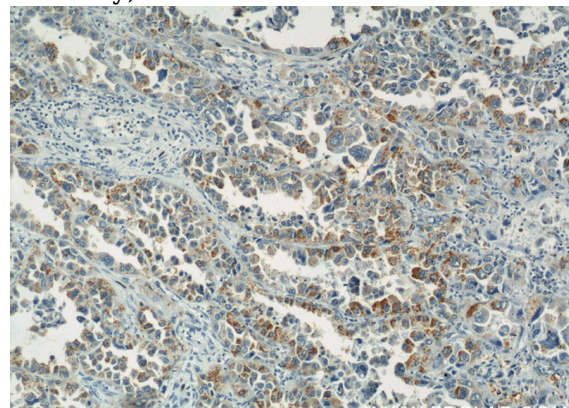
IHC: 1:50-1:500

IF: 1:10-1:100

Validations



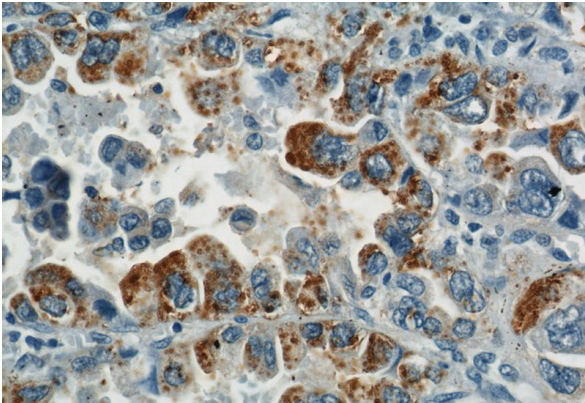
L02 cells were subjected to SDS PAGE followed by western blot with Catalog No:112277(LAMP2 antibody) at dilution of 1:300



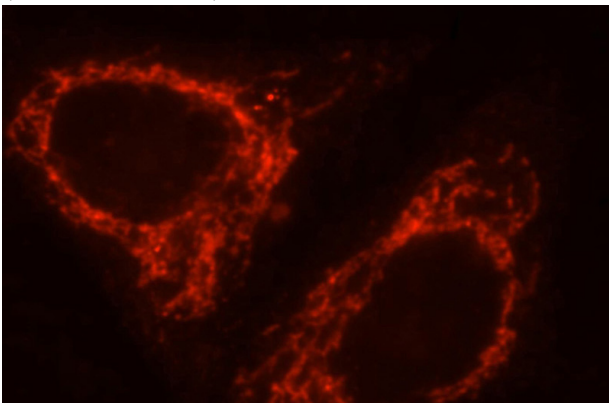
Immunohistochemical of paraffin-embedded human lung cancer using Catalog No:112277(LAMP2 antibody) at dilution of 1:50 (under 10x lens)

LAMP2 antibody

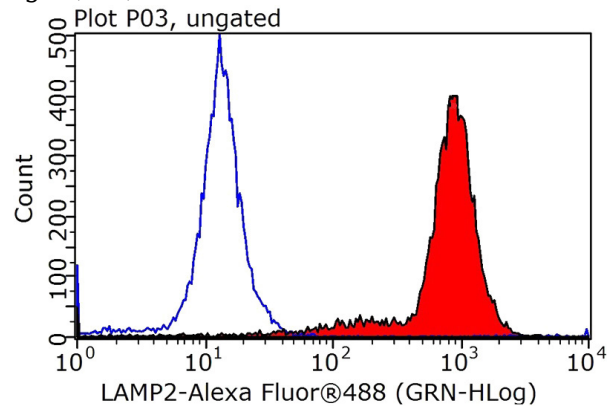
Catalog Number: 112277



Immunohistochemical of paraffin-embedded human lung cancer using Catalog No:112277(LAMP2 antibody) at dilution of 1:50 (under 40x lens)



Immunofluorescent analysis of HepG2 cells, using LAMP2 antibody Catalog No:112277 at 1:25 dilution and Rhodamine-labeled goat anti-rabbit IgG (red).



1×10^6 HepG2 cells were stained with .2ug LAMP2 antibody (Catalog No:112277, red) and control antibody (blue). Fixed with 90% MeOH blocked with 3% BSA (30 min). Alexa Fluor 488-conjugated AffiniPure Goat Anti-Rabbit IgG(H+L) with dilution 1:1000.