

# ELF4 antibody



Catalog Number: 110277

## Product name

ELF4 antibody

## Specificity

Human, Mouse, Rat; other species not tested.

## Antibody description

ELF4 Rabbit Polyclonal antibody. Positive IP detected in HeLa cells. Positive WB detected in NIH/3T3 cells, HeLa cells, Jurkat cells, mouse spleen tissue, PC-3 cells. Observed molecular weight by Western-blot: 71 kDa, 90-100 kDa

## Preparation

This antibody was obtained by immunization of ELF4 recombinant protein (Accession Number: XM\_047441900). Purification method: Antigen affinity purified.

## Formulation

PBS with 0.02% sodium azide and 50% glycerol pH 7.3.

## Storage

Store at -20°C. DO NOT ALIQUOT

## Clonality

Polyclonal

## Ig Type

Rabbit IgG

## Applications

ELISA, WB, IP

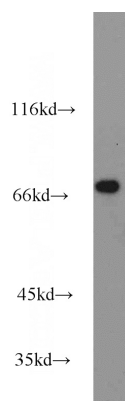
## Dilutions

Recommended Dilution:

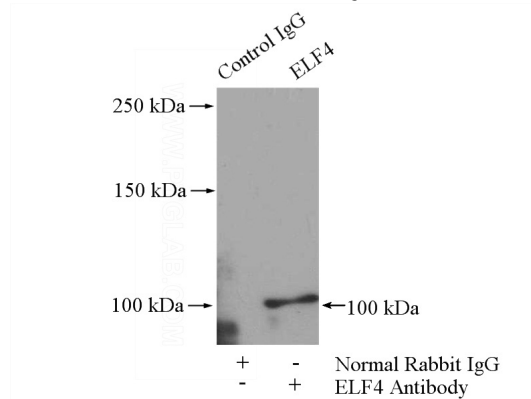
WB: 1:500-1:5000

IP: 1:200-1:2000

## Validations



NIH/3T3 cells were subjected to SDS PAGE followed by western blot with Catalog No:110277(ELF4 antibody) at dilution of 1:1000



IP Result of anti-ELF4 (IP:Catalog No:110277, 4ug; Detection:Catalog No:110277 1:500) with HeLa cells lysate 600ug.