

ALDOB antibody

Catalog Number: 107977

Product name

ALDOB antibody

WB: 1:500-1:5000

IP: 1:500-1:5000

Specificity

Human, Mouse, Rat; other species not tested.

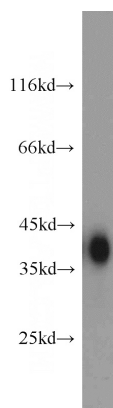
IHC: 1:20-1:200

IF: 1:10-1:100

Antibody description

ALDOB Rabbit Polyclonal antibody. Positive IHC detected in human liver tissue. Positive IF detected in HepG2 cells. Positive WB detected in mouse kidney tissue, mouse liver tissue, mouse skeletal muscle tissue. Positive IP detected in mouse kidney tissue. Observed molecular weight by Western-blot: 35-40 kDa

Validations



Preparation

This antibody was obtained by immunization of ALDOB recombinant protein (Accession Number: BC029399). Purification method: Antigen affinity purified.

mouse kidney tissue were subjected to SDS PAGE followed by western blot with Catalog No:107977(ALDOB antibody) at dilution of 1:4000

Formulation

PBS with 0.02% sodium azide and 50% glycerol pH 7.3.

Storage

Store at -20°C. DO NOT ALIQUOT

Clonality

Polyclonal

Ig Type

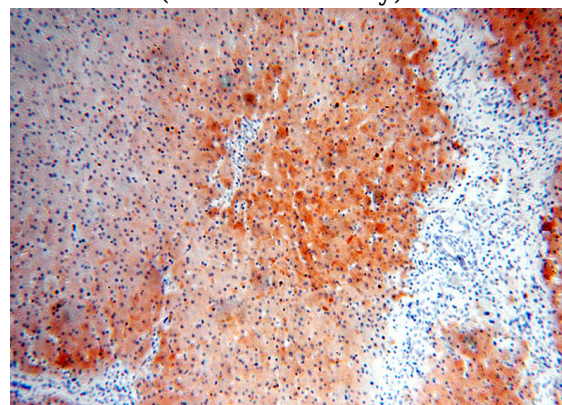
Rabbit IgG

Applications

ELISA, WB, IHC, IF, IP

Dilutions

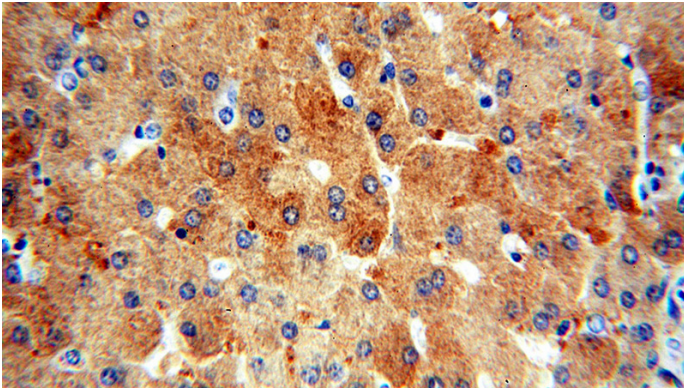
Recommended Dilution:



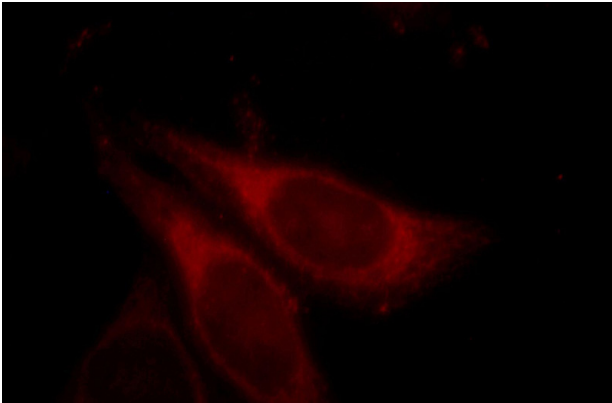
Immunohistochemical of paraffin-embedded human liver using Catalog No:107977(ALDOB antibody) at dilution of 1:100 (under 10x lens)

ALDOB antibody

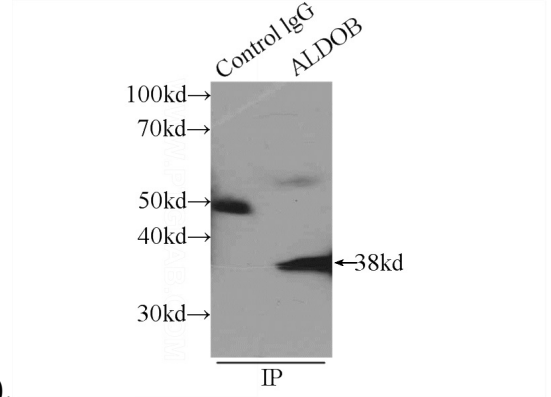
Catalog Number: 107977



Immunohistochemical of paraffin-embedded human liver using Catalog No:107977(ALDOB antibody) at dilution of 1:100 (under 40x lens)



Immunofluorescent analysis of HepG2 cells, using ALDOB antibody Catalog No:107977 at 1:25 dilution and Rhodamine-labeled goat anti-rabbit



IgG (red).

IP Result of anti-ALDOB (IP:Catalog No:107977, 4ug; Detection:Catalog No:107977 1:1000) with mouse kidney tissue lysate 4000ug.