

# SH2B1 antibody

Catalog Number: 115177

## Product name

SH2B1 antibody

WB: 1:200-1:2000

IP: 1:200-1:2000

## Specificity

Human; other species not tested.

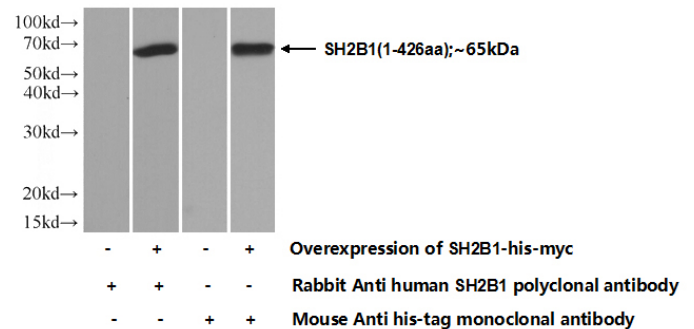
IHC: 1:20-1:200

IF: 1:20-1:200

## Antibody description

SH2B1 Rabbit Polyclonal antibody. Positive IHC detected in human ovary tissue, human skeletal muscle tissue. Positive IF detected in HeLa cells. Positive WB detected in Transfected HEK-293 cells, HEK-293 cells. Positive IP detected in HEK-293 cells. Observed molecular weight by Western-blot: 80 kDa

## Validations



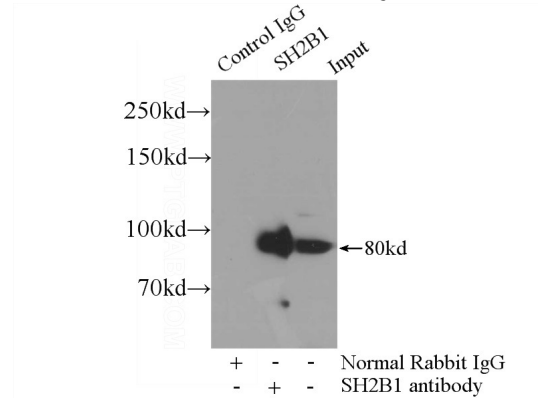
## Preparation

This antibody was obtained by immunization of SH2B1 recombinant protein (Accession Number: BC010704). Purification method: Antigen affinity purified.

Transfected HEK-293 cells were subjected to SDS PAGE followed by western blot with Catalog No:115177(SH2B1 Antibody) at dilution of 1:700

## Formulation

PBS with 0.1% sodium azide and 50% glycerol pH 7.3.



## Storage

Store at -20°C. DO NOT ALIQUOT

IP Result of anti-SH2B1 (IP:Catalog No:115177, 4ug; Detection:Catalog No:115177 1:600) with HEK-293 cells lysate 3000ug.

## Clonality

Polyclonal

## Ig Type

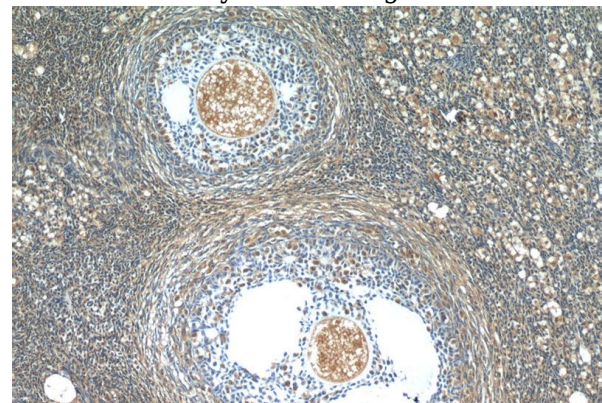
Rabbit IgG

## Applications

ELISA, WB, IP, IHC, IF

## Dilutions

Recommended Dilution:

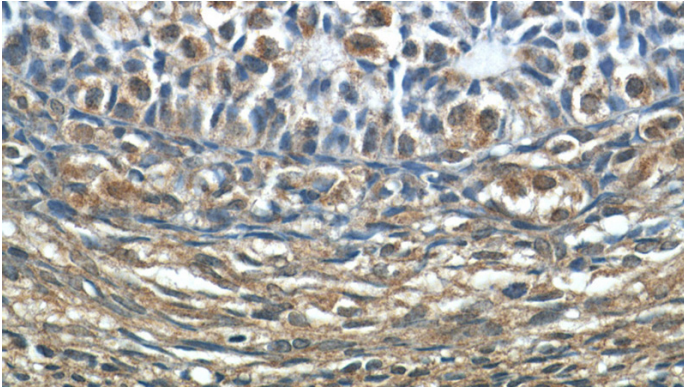



# SH2B1 antibody

Catalog Number: 115177

---

Immunohistochemistry of paraffin-embedded human ovary tissue slide using Catalog No:115177(SH2B1 Antibody) at dilution of 1:50 (under 10x lens)



Immunohistochemistry of paraffin-embedded human ovary tissue slide using Catalog No:115177(SH2B1 Antibody) at dilution of 1:50 (under 40x lens) 

Immunofluorescent analysis of HeLa cells using Catalog No:115177(SH2B1 Antibody) at dilution of 1:50 and Alexa Fluor 488-conjugated AffiniPure Goat Anti-Rabbit IgG(H+L)