

Anti-CD45/PTPRC antibody



Catalog Number: 105177

Product name

Anti-CD45/PTPRC antibody

Specificity

Human CD45 / PTPRC

Antibody description

Rabbit polyclonal to CD45/PTPRC

Preparation

Produced in rabbits immunized with a synthetic peptide corresponding to the center region of the Human CD45 / PTPRC, and purified by antigen affinity chromatography.

Formulation

0.2 µm filtered solution in PBS

Storage

This antibody can be stored at 2°C-8°C for one month without detectable loss of activity. Antibody products are stable for twelve months from date of receipt when stored at -20°C to -80°C.

Preservative-Free.

Sodium azide is recommended to avoid contamination (final concentration 0.05%-0.1%). It is toxic to cells and should be disposed of properly. Avoid repeated freeze-thaw cycles.

Clonality

Polyclonal

Ig Type

Rabbit IgG

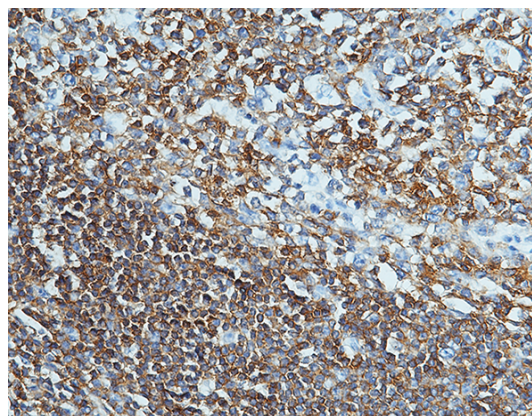
Applications

IHC-P

Dilutions

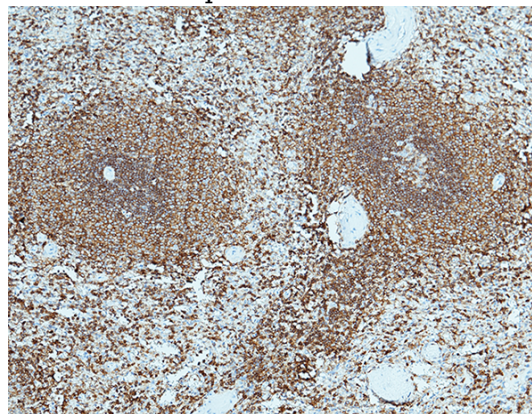
IHC-P: 0.1-2 µg/mL

Validations



CD45 / PTPRC Antibody, Rabbit PAb, Antigen Affinity Purified, Immunohistochemistry

Immunochemical staining of human LCA in human tonsil with rabbit polyclonal antibody (0.5 µg/mL, formalin-fixed paraffin embedded sections).



CD45 / PTPRC Antibody, Rabbit PAb, Antigen Affinity Purified, Immunohistochemistry

Immunochemical staining of human LCA in human spleen with rabbit polyclonal antibody (0.5 µg/mL, formalin-fixed paraffin embedded sections).