

GSR antibody

Catalog Number: 111177

Product name

GSR antibody

IP: 1:200-1:2000

IF: 1:10-1:100

Specificity

Human, Mouse, Rat; other species not tested.

Antibody description

GSR Rabbit Polyclonal antibody. Positive WB detected in Jurkat cells, HeLa cells, human placenta tissue, mouse lung tissue. Positive IP detected in HeLa cells. Positive IF detected in MCF-7 cells. Observed molecular weight by Western-blot: 52-55 kDa

Preparation

This antibody was obtained by immunization of GSR recombinant protein (Accession Number: NM_000637). Purification method: Antigen affinity purified.

Formulation

PBS with 0.02% sodium azide and 50% glycerol pH 7.3.

Storage

Store at -20°C. DO NOT ALIQUOT

Clonality

Polyclonal

Ig Type

Rabbit IgG

Applications

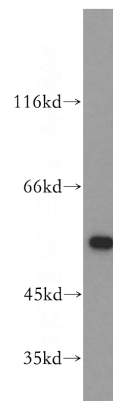
ELISA, WB, IF, IP

Dilutions

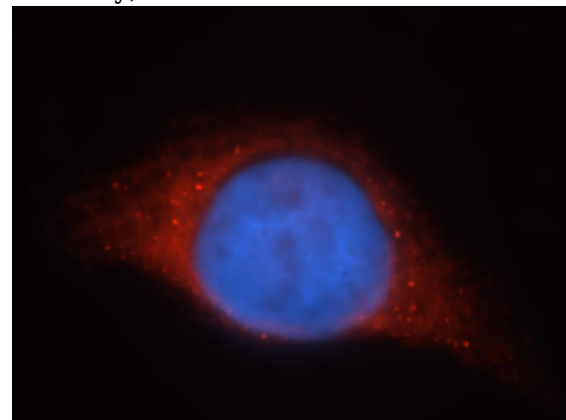
Recommended Dilution:

WB: 1:500-1:5000

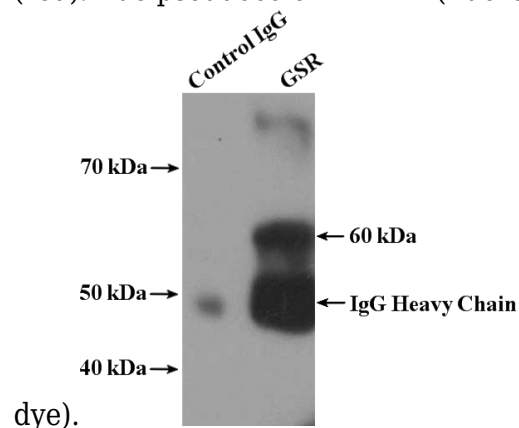
Validations



Jurkat cells were subjected to SDS PAGE followed by western blot with Catalog No:111177(GSR antibody) at dilution of 1:500



Immunofluorescent analysis of MCF-7 cells, using GSR antibody Catalog No:111177 at 1:25 dilution and Rhodamine-labeled goat anti-rabbit IgG (red). Blue pseudocolor = DAPI (fluorescent DNA



GSR antibody



Catalog Number: 111177

IP Result of anti-GSR (IP:Catalog No:111177, 4ug; Detection:Catalog No:111177 1:500) with HeLa cells lysate 2600ug.