

Anti-GSK3 beta Rabbit antibody



Catalog Number: 168877

Product name

Rabbit IgG

Anti-GSK3 beta Rabbit antibody

Applications

Specificity

WB, ICC/IF, FC

Human, Mouse

Dilutions

Antibody description

1:2000

GSK3 beta Rabbit monoclonal antibody

1:50

Preparation

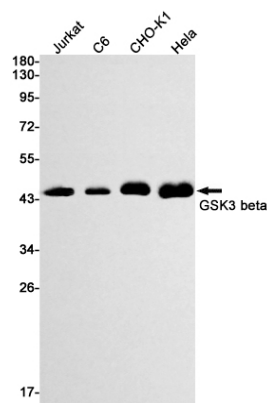
1:20

Antigen: A synthetic peptide of human GSK3 beta

Validations

Formulation

Supplied in 50nM Tris-Glycine(pH 7.4), 0.15M NaCl, 40%Glycerol, 0.01% sodium azide and 0.05% BSA.



Storage

Store at 4°C short term. Aliquot and store at -20°C long term. Avoid freeze / thaw cycle.

Clonality

Monoclonal

Western blot detection of GSK3 beta in Jurkat, C6, CHO-K1, HeLa cell lysates using GSK3 beta Rabbit mAb(1:1000 diluted). Predicted band size: 47kDa. Observed band size: 47kDa.

Ig Type