

# Alpha-2-macroglobulin antibody



Catalog Number: 107877

## Product name

Alpha-2-macroglobulin antibody

Recommended Dilution:

WB: 1:2000-1:20000

## Specificity

Human, Mouse, Rat; other species not tested.

IP: 1:200-1:1000

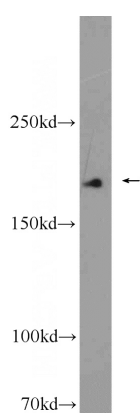
IHC: 1:20-1:200

## Antibody description

Alpha-2-macroglobulin Rabbit Polyclonal antibody. Positive IHC detected in human hepat°Cirrhosis tissue, human ovary tissue, human stomach tissue. Positive IF detected in HepG2 cells. Positive IP detected in HepG2 cells. Positive WB detected in human blood tissue, HepG2 cells, human brain tissue, human serum tissue. Observed molecular weight by Western-blot: 185 kDa

IF: 1:50-1:500

## Validations



human blood tissue were subjected to SDS PAGE followed by western blot with Catalog No:107877(A2M antibody) at dilution of 1:6000

## Preparation

This antibody was obtained by immunization of Alpha-2-macroglobulin recombinant protein (Accession Number: NM\_001347423). Purification method: Antigen affinity purified.

## Formulation

PBS with 0.02% sodium azide and 50% glycerol pH 7.3.

## Storage

Store at -20°C. DO NOT ALIQUOT

## Clonality

Polyclonal

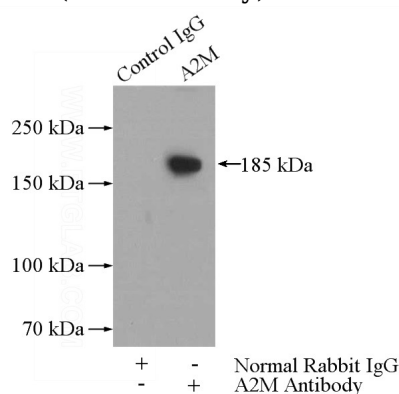
## Ig Type

Rabbit IgG

## Applications

ELISA, WB, IHC, IP, IF

## Dilutions

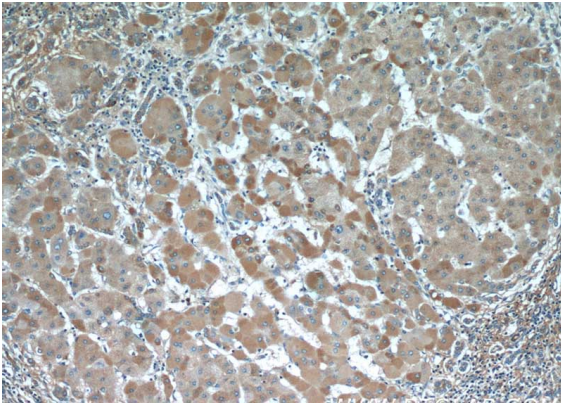


IP Result of anti-A2M (IP:Catalog No:107877, 5ug; Detection:Catalog No:107877 1:300) with HepG2 cells lysate 2800ug.

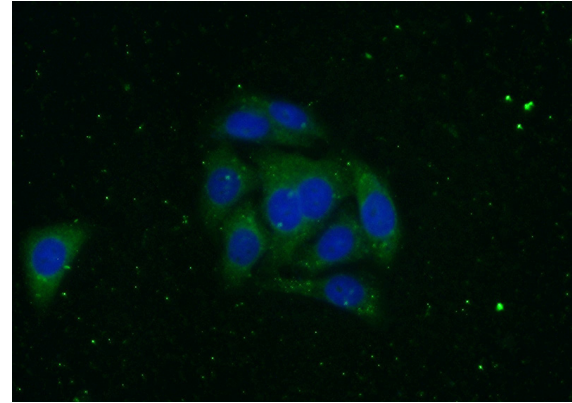
# Alpha-2-macroglobulin antibody



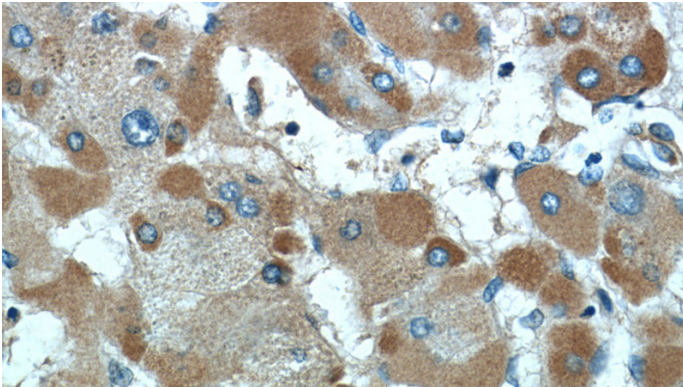
Catalog Number: 107877



Immunohistochemistry of paraffin-embedded human hepatocirrhosis tissue slide using Catalog No:107877(A2M Antibody) at dilution of 1:50 (under 40x lens)



Immunohistochemistry of paraffin-embedded human hepatocirrhosis tissue slide using Catalog No:107877(A2M Antibody) at dilution of 1:50 (under 10x lens)



Immunofluorescent analysis of (-20oc Ethanol) fixed HepG2 cells using Catalog No:107877(A2M Antibody) at dilution of 1:100 and Alexa Fluor 488-conjugated AffiniPure Goat Anti-Rabbit IgG(H+L)