

Gastrokine 1 antibody

Catalog Number: 110877

Product name

Gastrokine 1 antibody

Specificity

Human, Mouse; other species not tested.

Antibody description

Gastrokine 1 Rabbit Polyclonal antibody. Positive IHC detected in human stomach tissue. Positive WB detected in human stomach tissue, mouse stomach tissue. Observed molecular weight by Western-blot: 20-22 kDa

Preparation

This antibody was obtained by immunization of Gastrokine 1 recombinant protein (Accession Number: BC059778). Purification method: Antigen affinity purified.

Formulation

PBS with 0.1% sodium azide and 50% glycerol pH 7.3.

Storage

Store at -20°C. DO NOT ALIQUOT

Clonality

Polyclonal

Ig Type

Rabbit IgG

Applications

ELISA, WB, IHC

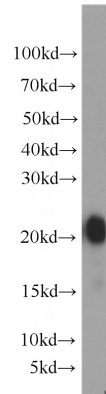
Dilutions

Recommended Dilution:

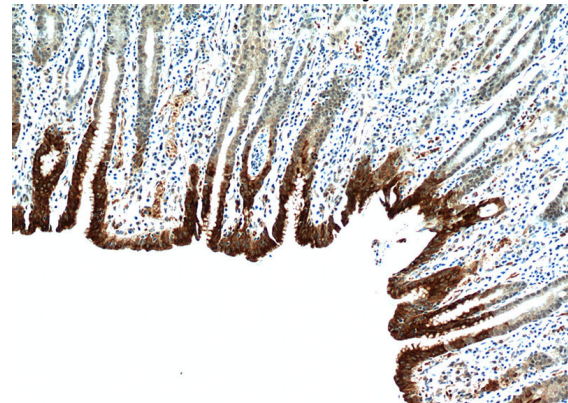
WB: 1:1000-1:10000

IHC: 1:20-1:200

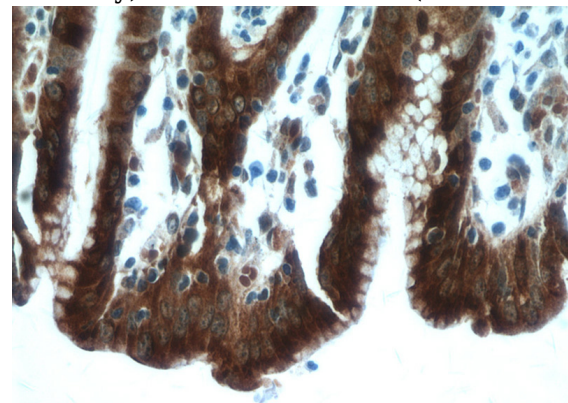
Validations



human stomach tissue were subjected to SDS PAGE followed by western blot with Catalog No:110877(GKN1 antibody) at dilution of 1:2000



Immunohistochemical of paraffin-embedded human stomach using Catalog No:110877(GKN1 antibody) at dilution of 1:100 (under 10x lens)



Immunohistochemical of paraffin-embedded human stomach using Catalog No:110877(GKN1 antibody) at dilution of 1:100 (under 40x lens)