

CRHR2 Polyclonal Antibody



Catalog Number: 165477

Product name

CRHR2 Polyclonal Antibody

Specificity

Human, Mouse, Rat

Antibody description

Polyclonal antibody to CRHR2

Preparation

Antigen: A synthetic peptide of human CRHR2

Formulation

PBS with 0.02% sodium azide, 50% glycerol, pH7.3.

Storage

Store at -20°C. Avoid freeze / thaw cycles.

Clonality

Polyclonal

Ig Type

Rabbit IgG

Applications

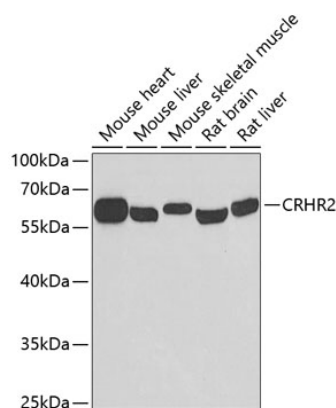
WB, IHC

Dilutions

WB 1:500 - 1:2000

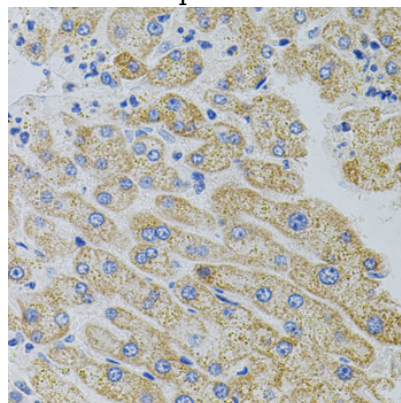
IHC 1:50 - 1:100

Validations



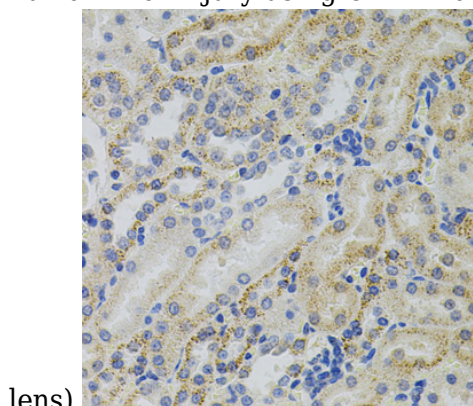
Western blot - CRHR2 Polyclonal Antibody

Western blot analysis of extracts of various cell lines, using CRHR2 antibody at 1:500 dilution. Secondary antibody: HRP Goat Anti-Rabbit IgG (H+L) at 1:10000 dilution. Lysates/proteins: 25ug per lane. Blocking buffer: 3% nonfat dry milk in TBST. Detection: ECL Basic Kit. Exposure time: 90s.



Immunohistochemistry - CRHR2 Polyclonal Antibody

Immunohistochemistry of paraffin-embedded human liver injury using CRHR2 antibody (40x



lens).

CRHR2 Polyclonal Antibody



Catalog Number: 165477

Immunohistochemistry - CRHR2 Polyclonal Antibody

Immunohistochemistry of paraffin-embedded rat kidney using CRHR2 antibody (40x lens).