

PACS2-Specific antibody



Catalog Number: 113477

Product name

PACS2-Specific antibody

Specificity

Human, Mouse, Rat; other species not tested.

Antibody description

PACS2-Specific Rabbit Polyclonal antibody. Positive WB detected in mouse brain tissue, human brain tissue, human heart tissue, mouse heart tissue. Positive IF detected in MCF-7 cells. Observed molecular weight by Western-blot: 116 kDa

Preparation

This antibody was obtained by immunization of Peptide (Accession Number: NM_015197). Purification method: Antigen affinity purified.

Formulation

PBS with 0.02% sodium azide and 50% glycerol pH 7.3.

Storage

Store at -20°C. DO NOT ALIQUOT

Clonality

Polyclonal

Ig Type

Rabbit IgG

Applications

ELISA, WB, IF

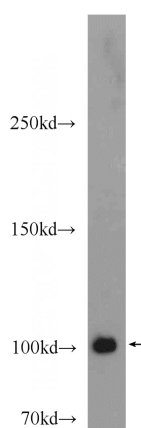
Dilutions

Recommended Dilution:

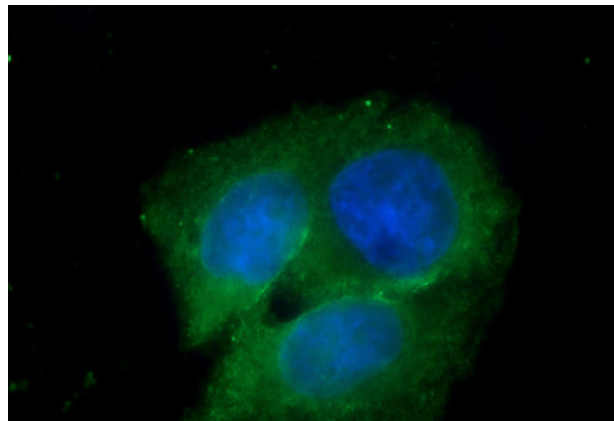
WB: 1:200-1:2000

IF: 1:10-1:100

Validations



mouse brain tissue were subjected to SDS PAGE followed by western blot with Catalog No:113477(PACS2-Specific antibody) at dilution of 1:600



Immunofluorescent analysis of MCF-7 cells using Catalog No:113477(PACS2-Specific Antibody) at dilution of 1:25 and Alexa Fluor 488-conjugated AffiniPure Goat Anti-Rabbit IgG(H+L)