

MARCKSL1 antibody



Catalog Number: 112477

Product name

MARCKSL1 antibody

Specificity

Human, Mouse, Rat; other species not tested.

Antibody description

MARCKSL1 Rabbit Polyclonal antibody. Positive WB detected in human brain tissue. Positive IHC detected in human lung cancer tissue, human liver cancer tissue, human pancreas cancer tissue. Observed molecular weight by Western-blot: 48 kDa

Preparation

This antibody was obtained by immunization of MARCKSL1 recombinant protein (Accession Number: NM_023009). Purification method: Antigen affinity purified.

Formulation

PBS with 0.1% sodium azide and 50% glycerol pH 7.3.

Storage

Store at -20°C. DO NOT ALIQUOT

Clonality

Polyclonal

Ig Type

Rabbit IgG

Applications

ELISA, WB, IHC

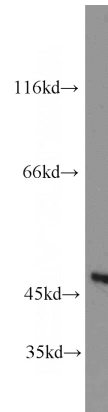
Dilutions

Recommended Dilution:

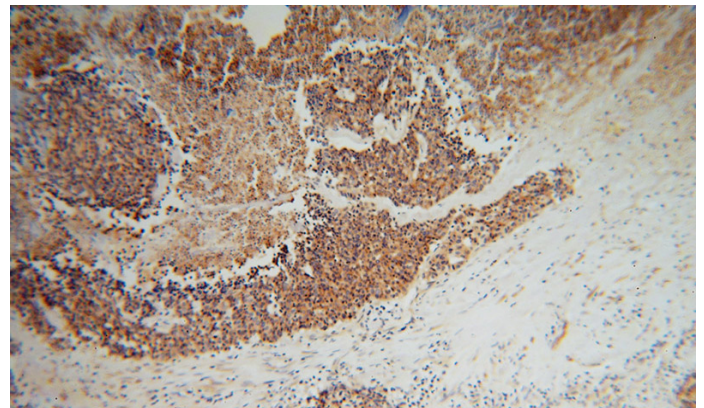
WB: 1:200-1:2000

IHC: 1:20-1:200

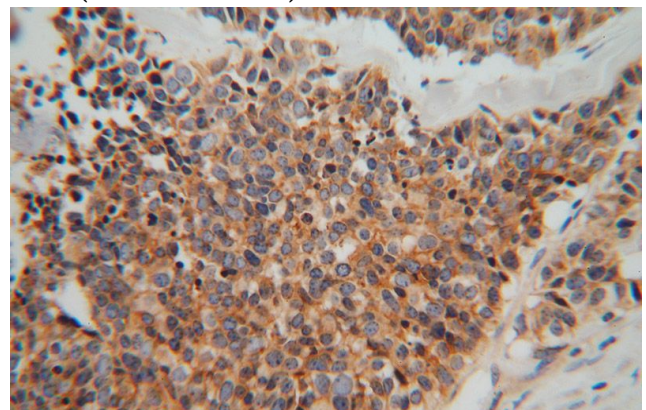
Validations



human brain tissue were subjected to SDS PAGE followed by western blot with Catalog No:112477(MARCKSL1 antibody) at dilution of 1:600



Immunohistochemical of paraffin-embedded human lung cancer using Catalog No:112477(MARCKSL1 antibody) at dilution of 1:50 (under 10x lens)



Immunohistochemical of paraffin-embedded

MARCKSL1 antibody



Catalog Number: 112477

human lung cancer using Catalog

No:112477(MARCKSL1 antibody) at dilution of
1:50 (under 40x lens)