

ESRP1 antibody

Catalog Number: 110477

Product name

ESRP1 antibody

Specificity

Human, Mouse; other species not tested.

Antibody description

ESRP1 Rabbit Polyclonal antibody. Positive WB detected in COLO 320 cells, mouse lung tissue. Positive IP detected in COLO 320 cells. Observed molecular weight by Western-blot: 76 kDa

Preparation

This antibody was obtained by immunization of ESRP1 recombinant protein (Accession Number: NM_001034915). Purification method: Antigen affinity purified.

Formulation

PBS with 0.1% sodium azide and 50% glycerol pH 7.3.

Storage

Store at -20°C. DO NOT ALIQUOT

Clonality

Polyclonal

Ig Type

Rabbit IgG

Applications

ELISA, WB, IP

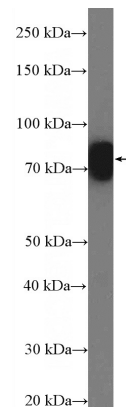
Dilutions

Recommended Dilution:

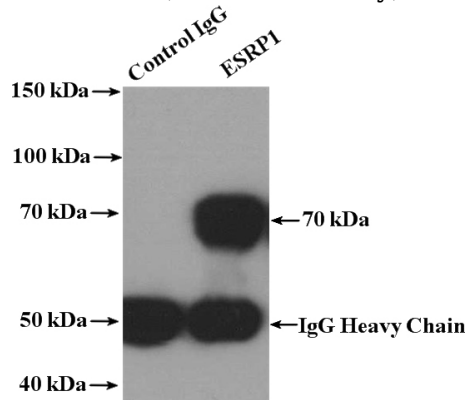
WB: 1:500-1:5000

IP: 1:200-1:1000

Validations



COLO 320 cells were subjected to SDS PAGE followed by western blot with Catalog No:110477(ESRP1 Antibody) at dilution of 1:1000



IP Result of anti-ESRP1 (IP:Catalog No:110477, 4ug; Detection:Catalog No:110477 1:300) with COLO 320 cells lysate 4000ug.