

# KLF12 antibody



Catalog Number: 112077

---

## Product name

KLF12 antibody

## Specificity

Human, Mouse, Rat; other species not tested.

## Antibody description

KLF12 Rabbit Polyclonal antibody. Positive WB detected in Raji cells, HepG2 cells, human kidney tissue. Observed molecular weight by Western-blot: 65 kDa

## Preparation

This antibody was obtained by immunization of KLF12 recombinant protein (Accession Number: NM\_001400139). Purification method: Antigen affinity purified.

## Formulation

PBS with 0.02% sodium azide and 50% glycerol pH 7.3.

## Storage

Store at -20°C. DO NOT ALIQUOT

## Clonality

Polyclonal

## Ig Type

Rabbit IgG

## Applications

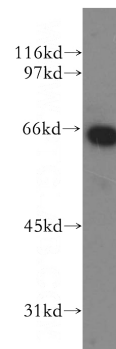
ELISA, WB

## Dilutions

Recommended Dilution:

WB: 1:500-1:5000

## Validations



Raji cells were subjected to SDS PAGE followed by western blot with Catalog No:112077(KLF12 antibody) at dilution of 1:400