

Human Carboxypeptidase E/CPE (His Tag) recombinant protein



Catalog Number: 503767

General Information

Gene Name Synonym

Carboxypeptidase H; Enkephalin convertase;
Prohormone-processing carboxypeptidase

Protein Construction

A DNA sequence encoding the human carboxypeptidase E (CPE) precursor (NP_001864.1) (Met 1-Ser 453) was fused with a polyhistidine tag at the C-terminus.

Organism

Human

Expression Host

Human Cells

QC Testing

Activity

Measured by its ability to cleave a peptide substrate, benzoyl-AR-OH. The product, Arg, is reacted with orthophthaldialdehyde (OPA) to form a fluorescent molecule. The specific activity is >12,000 pmoles/min/ μ g.

Purity

> 90 % as determined by SDS-PAGE

Endotoxin

< 1.0 EU per μ g of the protein as determined by the LAL method

Stability

Samples are stable for up to twelve months from date of receipt at -70°C

Predicted N terminal

Glu 26

Molecular Mass

The recombinant human CPE comprises 439 amino acids and predicts a molecular mass of 49.4 kDa. As a result of glycosylation, the apparent molecular mass of rhCPE is approximately 53 kDa in SDS-PAGE under reducing conditions.

Formulation

Lyophilized from sterile PBS, pH 7.4

1. 5 % trehalose and mannitol are added as protectants before lyophilization.

2. Please contact us for any concerns or special requirements.

Usage Guide

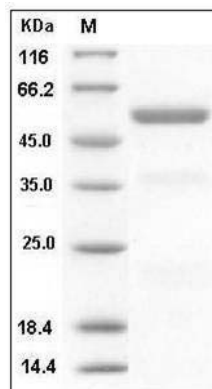
Storage

Store it under sterile conditions at -20°C to -80°C. It is recommended that the protein be aliquoted for optimal storage. Avoid repeated freeze-thaw cycles.

Reconstitution

Adding sterile water, prepare a stock solution of 0.25 mg/ml. Concentration is measured by UV-Vis.

SDS-PAGE



Human Carboxypeptidase E / CPE Protein (His Tag) SDS-PAGE