

# BBS1 antibody

Catalog Number: 108367

## Product name

BBS1 antibody

IP: 1:200-1:2000

IF: 1:20-1:200

## Specificity

Human, Mouse; other species not tested.

## Antibody description

BBS1 Rabbit Polyclonal antibody. Positive WB detected in mouse kidney tissue, mouse brain tissue, mouse heart tissue. Positive IP detected in mouse brain tissue. Positive IF detected in hTERT-RPE1 cells. Observed molecular weight by Western-blot: 65 kDa

## Preparation

This antibody was obtained by immunization of BBS1 recombinant protein (Accession Number: BC047642). Purification method: Antigen affinity purified.

## Formulation

PBS with 0.1% sodium azide and 50% glycerol pH 7.3.

## Storage

Store at -20°C. DO NOT ALIQUOT

## Clonality

Polyclonal

## Ig Type

Rabbit IgG

## Applications

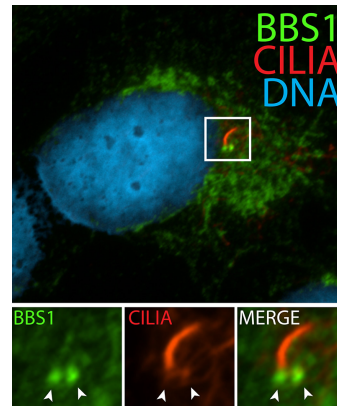
ELISA, IF, WB, IP

## Dilutions

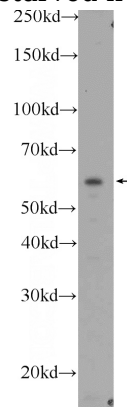
Recommended Dilution:

WB: 1:200-1:2000

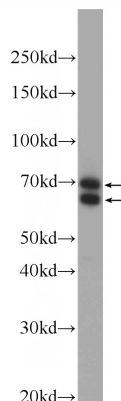
## Validations



IF result (base of ciliary stain) of anti-BBS1 (Catalog No:108367, 1:50) with with serum-starved hTERT-RPE1 cells by Dr. Moshe Kim.



mouse kidney tissue were subjected to SDS PAGE followed by western blot with Catalog No:108367(BBS1 Antibody) at dilution of 1:600



mouse brain tissue were subjected to SDS PAGE followed by western blot with Catalog

# BBS1 antibody

Catalog Number: 108367

No:108367(BBS1 Antibody) at dilution of 1:600

IP Result of anti-BBS1 (IP:Catalog No:108367, 4ug; Detection:Catalog No:108367 1:600) with mouse brain tissue lysate 4000ug.

