

MAD2L1 antibody



Catalog Number: 112367

Product name

MAD2L1 antibody

IP: 1:200-1:2000

IHC: 1:20-1:200

Specificity

Human, Mouse, Rat; other species not tested.

Antibody description

MAD2L1 Rabbit Polyclonal antibody. Positive IHC detected in human liver cancer tissue, human ovary tumor tissue. Positive IP detected in HEK-293 cells. Positive WB detected in HEK-293 cells, HeLa cells, rat liver tissue. Observed molecular weight by Western-blot: 25-30kd

Preparation

This antibody was obtained by immunization of MAD2L1 recombinant protein (Accession Number: NM_002358). Purification method: Antigen affinity purified.

Formulation

PBS with 0.1% sodium azide and 50% glycerol pH 7.3.

Storage

Store at -20°C. DO NOT ALIQUOT

Clonality

Polyclonal

Ig Type

Rabbit IgG

Applications

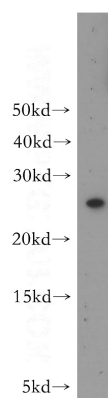
ELISA, WB, IHC, IP

Dilutions

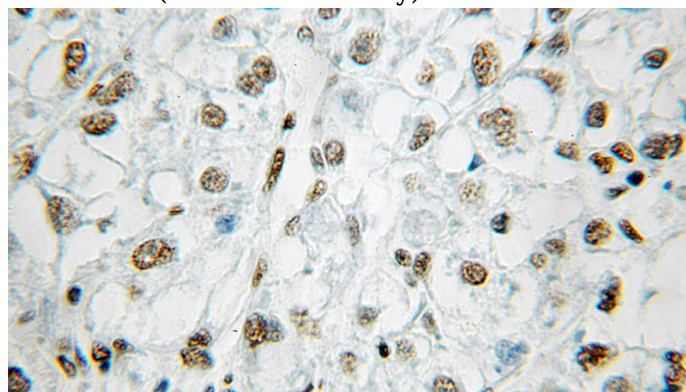
Recommended Dilution:

WB: 1:200-1:2000

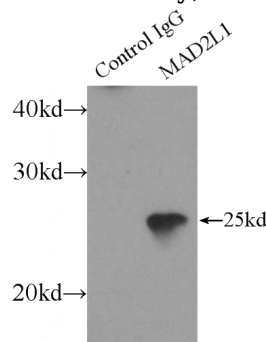
Validations



HEK-293 cells were subjected to SDS PAGE followed by western blot with Catalog No:112367(MAD2L1 antibody) at dilution of 1:800



Immunohistochemical of paraffin-embedded human liver cancer using Catalog No:112367(MAD2L1 antibody) at dilution of 1:50



(under 25x lens)

	+	-	
Control IgG	+	-	Normal Rabbit IgG
MAD2L1	-	+	MAD2L1 Antibody

IP Result of anti-MAD2L1 (IP:Catalog No:112367, 3ug; Detection:Catalog No:112367 1:500) with

MAD2L1 antibody



Catalog Number: 112367

HEK-293 cells lysate 1800ug.