

Anti-CTSV antibody



Catalog Number: 141367

Product name

Anti-CTSV antibody

Immunogen

[Human Cathepsin V/Cathepsin L2/Preproprotein \(His Tag\)](#)

Specificity

Human Cathepsin V / Cathepsin L2 / Preproprotein

Antibody description

Rabbit Polyclonal to Human CTSV

Preparation

Produced in rabbits immunized with purified, recombinant Human Cathepsin V / Cathepsin L2 / Preproprotein . Cathepsin V / Cathepsin L2 / Preproprotein specific IgG was purified by Human Cathepsin V / Cathepsin L2 / Preproprotein affinity chromatography.

Formulation

0.2 µm filtered solution in PBS

Storage

This antibody can be stored at 2°C-8°C for one month without detectable loss of activity. Antibody products are stable for twelve months from date of receipt when stored at -20°C to -80°C.

Preservative-Free.

Sodium azide is recommended to avoid contamination (final concentration 0.05%-0.1%). It is toxic to cells and should be disposed of

properly. Avoid repeated freeze-thaw cycles.

Clonality

Polyclonal

Ig Type

Rabbit IgG

Applications

WB, ELISA

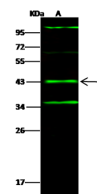
Dilutions

WB: 5-20 µg/ml

ELISA: 0.1-0.2 µg/ml

This antibody can be used at 0.1-0.2 µg/ml with the appropriate secondary reagents to detect Human Cathepsin V / Cathepsin L2 / Preproprotein.

Validations



Items	Lanes
Sample (whole cell lysate)	A549
Sample Volume (µg/lane)	30
Gel	13% SDS-PAGE reducing gel
Recommended Concentration	5-20 µg/ml
Secondary Antibody	Dylight 800-labeled Antibody to Rabbit IgG (H+L), at 1:5000 dilution. Developed using Odyssey imaging system.
Explanation	Predicted band size : 37 kDa Observed band size : 43 kDa Additional bands at : 35 kDa, 65 kDa and 110 kDa (We are unsure as to the identity of these extra bands.)

Cathepsin V / Cathepsin L2 / Preproprotein Antibody, Rabbit PAb, Antigen Affinity Purified, Western blot