

Human Hemojuvelin / HFE2 (His Tag) recombinant protein



Catalog Number: 500367

General Information

Gene Name Synonym

Hemochromatosis type 2 protein; RGM domain family member C

Protein Construction

A DNA sequence encoding the mature form of human HFE2 isoform a (Q6ZVN8-1) (Met 1-Ser 399) was fused with a polyhistidine tag at the C-terminus.

Organism

Human

Expression Host

Baculovirus-Insect Cells

QC Testing

Purity

> 95 % as determined by SDS-PAGE

Endotoxin

< 1.0 EU per μg of the protein as determined by the LAL method

Stability

Samples are stable for up to twelve months from date of receipt at -70°C

Predicted N terminal

Gln 36

Molecular Mass

The secreted recombinant human HFE2 consists of 374 amino acids and predicts a molecular mass

of 40 kDa. As a result of intracellular cleavage, the apparent molecular mass of the protein is approximately 20, 34 and 44 KDa in SDS-PAGE under reducing conditions, corresponding to the N-terminal, C-terminal portions and the full-length respectively.

Formulation

Lyophilized from sterile PBS, 500mM NaCl, pH 7.0, 10% gly

1. 5 % trehalose and mannitol are added as protectants before lyophilization.

2. Please contact us for any concerns or special requirements.

Usage Guide

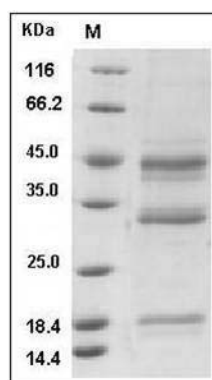
Storage

Store it under sterile conditions at -20°C to -80°C . It is recommended that the protein be aliquoted for optimal storage. Avoid repeated freeze-thaw cycles.

Reconstitution

Adding sterile water, prepare a stock solution of 0.25 mg/ml. Concentration is measured by UV-Vis.

SDS-PAGE



Human Hemojuvelin / HFE2 Protein (His Tag)
SDS-PAGE