

# Cyclin G antibody



Catalog Number: 109667

## Product name

Cyclin G antibody

## Specificity

Human, Mouse, Rat; other species not tested.

## Antibody description

Cyclin G Rabbit Polyclonal antibody. Positive IHC detected in human breast cancer tissue. Positive WB detected in Jurkat cells, HeLa cells, MDA-MB-453s cells, mouse liver tissue, mouse ovary tissue. Observed molecular weight by Western-blot: 34 kDa

## Preparation

This antibody was obtained by immunization of Cyclin G recombinant protein (Accession Number: NM\_199246). Purification method: Antigen affinity purified.

## Formulation

PBS with 0.1% sodium azide and 50% glycerol pH 7.3.

## Storage

Store at -20°C. DO NOT ALIQUOT

## Clonality

Polyclonal

## Ig Type

Rabbit IgG

## Applications

ELISA, WB, IHC

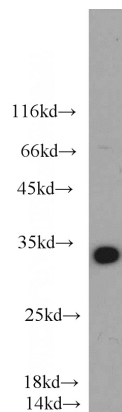
## Dilutions

Recommended Dilution:

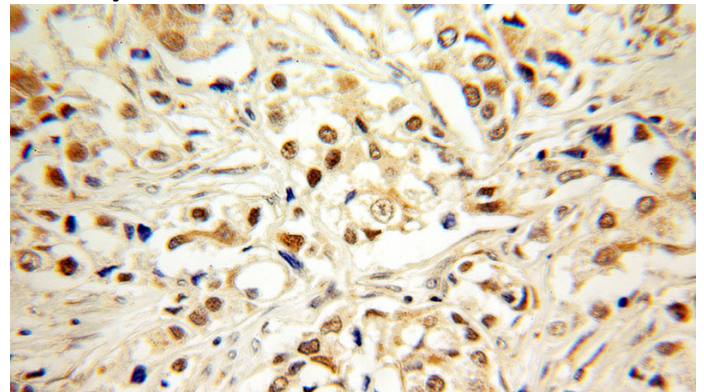
WB: 1:500-1:5000

IHC: 1:20-1:200

## Validations



Jurkat cells were subjected to SDS PAGE followed by western blot with Catalog No:109667(CCNG1 antibody) at dilution of 1:1000



Immunohistochemical of paraffin-embedded human breast cancer using Catalog No:109667(CCNG1 antibody) at dilution of 1:100 (under 10x lens)