

Anti-Sumo 1 Rabbit antibody

Catalog Number: 166667

Product name

Anti-Sumo 1 Rabbit antibody

Specificity

Human, Mouse, Rat

Antibody description

Sumo 1 Rabbit polyclonal antibody

Preparation

Antigen: Recombinant Protein

Formulation

Supplied at 1.0mg/mL in phosphate buffered saline (without Mg²⁺ and Ca²⁺), pH 7.4, 150mM NaCl, 0.02% sodium azide and 50% glycerol

Storage

Store at 4°C short term. Store at -20°C long term. Avoid freeze / thaw cycle.

Clonality

Polyclonal

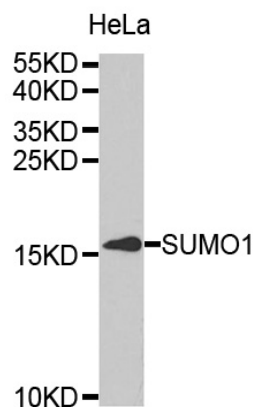
Ig Type

Rabbit IgG

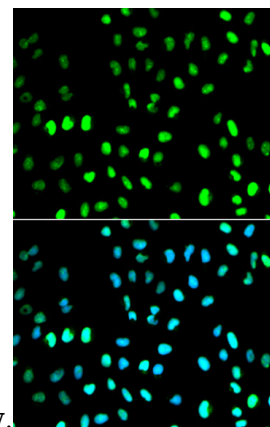
Applications

WB, ICC/IF

Validations



Western blot analysis of extracts of HeLa cell line,



using SUMO1 antibody.

Immunofluorescence analysis of MCF7 cell using SUMO1 antibody. Blue: DAPI for nuclear staining.